

15888PFX Epic PF Silver Shimmer
85370PFX Epic Gold Shimmer
85570PFX Epic Ultra Gold Shimmer

Wilflex™ Epic Shimmers are non-phthalate shimmer inks that can be used as multi-purpose inks to produce shiny finishes and can be used in combination with other non-phthalate Epic system inks. Epic Shimmers can be printed as a high density image or as a flat print graphic concept.

Highlights

- ▶ Smooth surface.
- ▶ Excellent adhesion to fabrics.
- ▶ Excellent stretch properties.
- ▶ Use in combination with other Epic inks.
- ▶ Can be printed as a high density ink or combined with other non-phthalate inks.
- ▶ Can be used on light or dark grounds. Best on darks.
- ▶ Excellent wash properties.

Printing Tips

- ▶ Add Epic PCs or EQualizers to created tinted metallic effects./A heavy flood stroke that fully fills the open areas of the stencil with ink is recommended.
- ▶ Use a print-flash-print method to build ink density. Do not print wet-on-wet.

Compliance

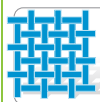
- ▶ Non-phthalate.
- ▶ For individual compliance certifications, please visit www.wilflex.com/compliance.

Precautions

- ▶ Perform fusion tests before production. Failure to cure ink properly may result in poor wash fastness, inferior adhesion and unacceptable durability. Ink gel and cure temperatures should be measured using a Thermoprobe placed directly in the wet ink film and verified on the production run substrate(s) and production equipment. It is the responsibility of the printer to determine that the correct ink has been selected for a specific substrate and the application processes meet your customer's standards or specifications.
- ▶ Avoid over flashing as it can result in poor intercoat adhesion of colors.
- ▶ Avoid polyester fabrics where dye migration will occur.
- ▶ Reducing viscosity will adversely affect opacity.
- ▶ Stir plastisols before printing.
- ▶ Do not dry clean, bleach or iron printed area.
- ▶ **NON-CONTAMINATION OF EPIC INKS:** Do not add or mix non-Epic inks, additives or extenders with Epic inks. All buckets, palette knives, stirring apparatus, squeegees, flood bars and screens must be cleaned properly and free of phthalates and pvc containing inks. Non-phthalate emulsions and pallet adhesives must be used. Failure to follow these precautions may cause phthalate contamination in violation of consumer protection laws and regulations.
- ▶ Any application not referred in this product information bulletin should be pre-tested or consultation sought with Wilflex Technical Services Department prior to printing.
- ▶ Email: techserviceswilflex@polyone.com



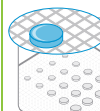
Fabric Types
 100% cotton, cotton blends, acrylic, Lycra & uncoated nylon



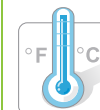
Mesh
 Counts: 86-110 t/in (34-43 t/cm)
 Tension: 25-35 n/cm²



Squeegee
 Durometer: 75, 60/90/60
 Edge: Square, Sharp
 Stroke: Medium
 *Do not use excess squeegee pressure.



Non-Phthalate Stencil
 Direct: 2 over 2
 Capillary/Thick Film: 200-600 microns
 Off Contact: 1/16" (.2cm)



Flash & Cure Temperatures
 Flash: 220°F (105°C)
 Cure: 300°F (150°C)



Pigment Loading
 EQ: 10% max
 MX: N/A
 PC: 10% max
 *All percentages listed at % by weight.



Epic Additives
 Extender: N/A
 Reducer: Epic Viscosity Buster-3% max
 *All percentages listed at % by weight.



Storage
 65-90°F (18-32°C)
 Avoid direct sunlight.
 Use within one year of receipt.



Clean Up
 Ink degradant or press wash.



Health & Safety
 MSDS: www.polyone.com or
 Contact your local CSR.

15888PFX EPIC PF SILVER SHIMMER; 85370PFX EPIC GOLD SHIMMER; 85570PFX EPIC ULTRA GOLD SHIMMER; 05-2012v1