

ADVANTAGES OF HYBRID



TWO PLATFORMS IN ONE SMALL FOOTPRINT, THE EFI PRO 16H HYBRID PRINTER PROVIDES GREATER FLEXIBILITY AND MORE PROFIT OPPORTUNITIES TO BOOST YOUR BUSINESS.

DIGITAL PRINTING



Visit us online at
SourceOne.Nazdar.com
for more information about
wide format equipment
from EFI.

INTRODUCTION TO THE EFI PRO 16h LED

As the wide format digital printing market becomes more competitive, print shops are adjusting their business models to increase productivity and build their portfolio of product offerings to broaden their reach. EFI has made this possible and affordable with their line of hybrid printers – including their newest hybrid, the EFI Pro 16h LED. Print on more substrates and open doors to more applications and unique creative opportunities with just one printer. The information below will introduce you to the great benefits hybrid printers can bring to your business.

HYBRID ADVANTAGES

By combining the best of both worlds in roll-to-roll and flatbed printing, the possibilities for a hybrid printer are almost limitless.

- Two print platforms, one low price
- Small overall footprint makes it easier to install while providing more processing and finishing
- Shift from rigid to flexible media in minutes, providing more uptime and productivity
- Better static control improves print quality and consistency
- Greater flexibility makes it easier to schedule jobs based on urgency versus type
- Wider range of substrates allows for greater profit opportunities with an expanded portfolio of offerings to your customers

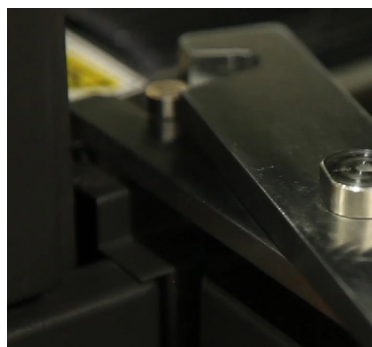
EASE OF UPGRADE

No matter the type of printer you're currently using, transitioning to a hybrid is effortless. Users of wide format roll-to-roll units, similar to Roland / Mimaki / Mutoh, will find that webbing of flexible media will be similar and easily accomplished. Users of pinch roller type hybrids will find identical function with improved media handling with a zoned vacuum belt. Plus, smaller, unassembled construction allows for installation in smaller shops with standard 36" doors.

SET-UP TIME

Changeover from rigid to flexible media jobs is quick and easy. Five minutes is all you need. There is no need to tape off or block the vacuum bed with hybrid printers. Traditional flatbeds need the vacuum table blocked off to expose vacuum only in areas the substrate lays. For example, if blocking / taping occurs four times per day, for each removal and replacement it takes approximately 10 minutes, multiply that by a 20 work-day month and you've lost 13.3 hours of production. The EFI Pro 16h LED has fast release support tables, which also saves set-up time. When changing over from rigid to flexible substrates and media, simply release the extension tables and you are ready to load rolled media.

“CHANGEOVER FROM RIGID TO FLEXIBLE MEDIA JOBS IS QUICK AND EASY. FIVE MINUTES IS ALL YOU NEED.”



←
FAST RELEASE

MEDIA HANDLING

There is no need for pre-sheeting flexible media with a hybrid printer. Traditional flatbed printers, without a flexible media handling option, require some additional handling pre- and post-printing. This can include sheeting, loading, unloading and bed masking. Hybrid printing reduces static that is created with flexible media. When using the flexible media option with traditional flatbeds, the roll webs over the long expanse of the table. This movement across the surface builds static and can create print quality and consistency issues. The EFI Pro 16h LED features flexible and rigid media feeds up to 100 pounds, automatic media height detection and edge management.

NAZDAR SOURCEONE FEATURED PRODUCT

EFI™ Wide Format UV inkjet printers are a great way to enter into the wide format display graphics printing business, tapping into new markets and revenue streams, and reclaiming outsourced work. EFI hybrid flatbed/roll-to-roll printers are ideal for overflow and specialty printing, and for print businesses looking to increase customer satisfaction and profitability with quick service and high image quality.



EFI Pro 16h LED UV Hybrid Inkjet Printer

The EFI™ Pro 16h LED UV hybrid inkjet printer has been strategically designed with a complete stimulus package of features to assure the lowest total cost of ownership, superior image quality and access to the widest range of substrates/applications.

[CLICK HERE TO LEARN MORE ABOUT THE Pro 16h >](#)



NAZDAR SOURCEONE

Nazdar SourceOne is the leading supplier of screen and digital printing equipment, inks and supplies. We maintain relationships with the world's foremost manufacturers, providing best-in-class technology and quality to specialty graphic printers in the United States, Mexico and Central America. With a network of 15 locations, we deliver localized inventory, superior customer service and expert technical support to the graphic, textile and industrial markets. Learn more at SourceOne.Nazdar.com.