



# EFI FIERY XF SOFTWARE:

Superior color accuracy and  
increased productivity

**DIGITAL PRINTING**



Visit us online at [SourceOne.Nazdar.com](http://SourceOne.Nazdar.com) for more information and to see our full offering of EFI printers.

## OVERVIEW

As inkjet printing grows for a broad range of applications, the need for color accuracy and consistency increases. Fiery® XF Version 6 is the easiest way to introduce sophisticated color management, including media calibration and output optimization of your device. The result is superior color accuracy and increased overall productivity.

## STUNNING, PRECISE & PREDICTABLE QUALITY PRINTS

Accurate spot and process color matching, including advanced spot and process color optimization through multiple iterations:

- Allows you to re-print complete jobs or single elements with the same visual appearance as the first run
- Removes the need for time consuming trial and error color correction or complicated device link profiles
- Allows you to interchange profiles with ICC compliant color management
- Gives accurate and predictable results with ISO, G7 and FOGRA PSD compliance

## DYNAMIC COLOR TECHNOLOGY



perceptual



colorimetric



- The EFI Dynamic Rendering Intent analyzes each image for colors and saturation
- Fully automates selection of best gamut compression method for actual image colors and available printer/media combination
- Provides best possible color reproduction without user intervention

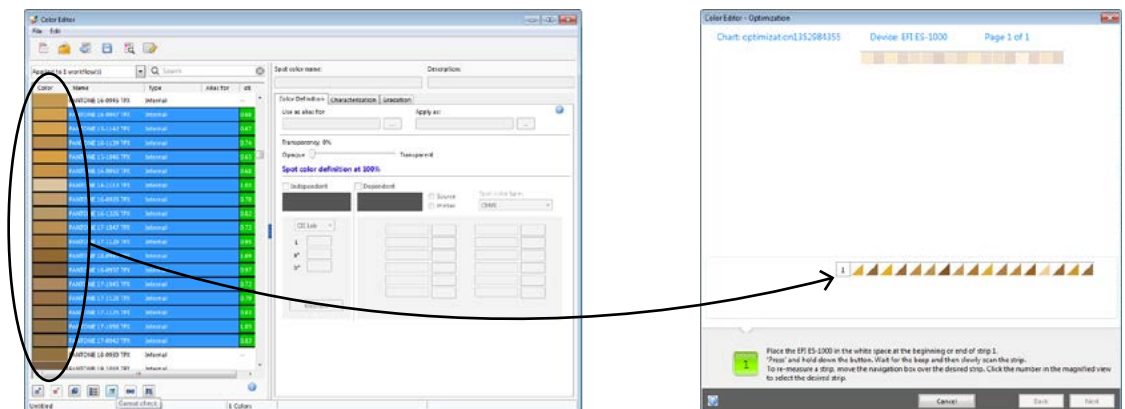
## STANDARDS-COMPLIANT PRECISION

Fiery XF supports the latest color standards:

- PANTONE® Plus library, with 336 new PANTONE colors:
  - Ensures the best possible reproduction no matter what PANTONE color the designer picks
- New XGRA measurement device standard:
  - Ensures the highest data exchange quality and minimizes the differences between X-Rite measurement devices
- M0, M1 and M2 measurement conditions:
  - Allows ISO 13655-compliant measurements for the best color match under the latest viewing-standard conditions
- The latest FOGRA PSD/G7 pass/fail criteria:
  - Makes Fiery XF an officially recognized G7 support tool
  - Requires color verifier option

## SUPERIOR SPOT COLOR MATCH

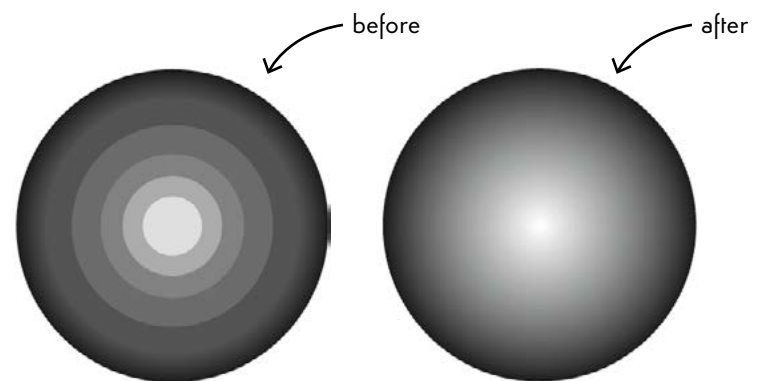
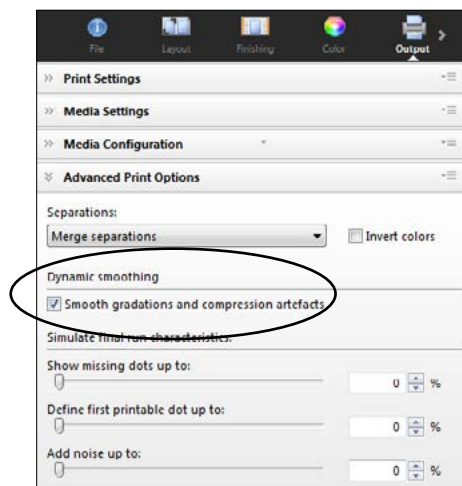
- Colorimetric estimation of spot color accuracy for specific printer/media combinations:
  - Enables data-driven printer/media selection for best results
- Extensive spot color matching tools:
  - Unlimited number of tints
  - Device-independent or dependent color definition
  - Wizard-driven optimization by measurements, including creation of custom spot color test chart
  - Multiple, user-selectable sophisticated overprinting algorithms



## FIERY DYNAMIC SMOOTHING

Fiery XF supports the latest color standards:

- Dynamic smoothing feature is exclusive to Fiery
- Stepping in gradients virtually eliminated
- The proof is in the smoothness of the print
- Smooths gradations, compression artifacts and highlight areas without affecting fonts and fine contours
- Works with any file format and any printer



4 Parallel Adobe  
PostScript Engines

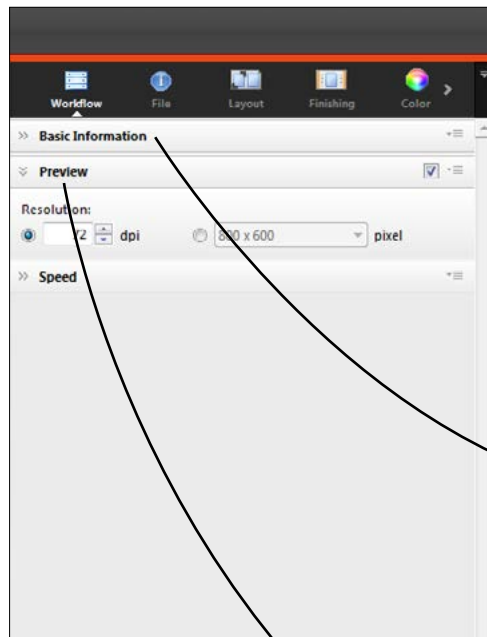


4 Parallel Adobe PDF  
Print Engines

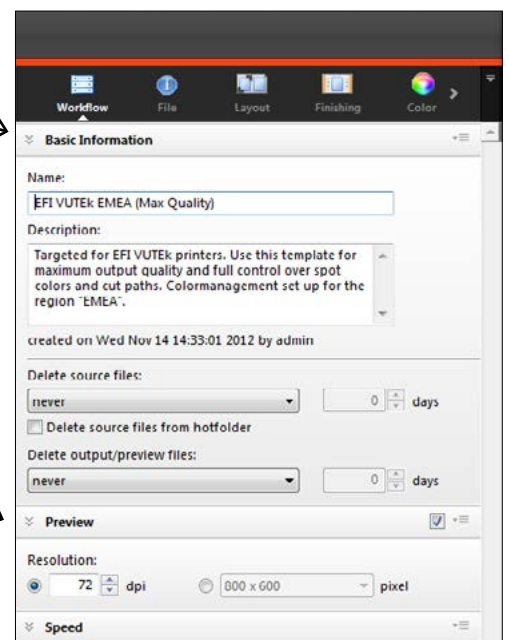
## INTEGRATED TECHNOLOGY

- Parallel processing with up to 4 Adobe PostScript Engines and 4 Adobe PDF Print Engines per Fiery XF server under Windows 64-bit
- Best usage of all available CPU cores
- Significant performance benefit
- Latest Adobe PDF engine 2.6 implementation ensures the highest level of file integrity, better handling of transparencies, overprints and all PDF codes created by Adobe products
- Passes industry's toughest PDF tests

## CUSTOMIZABLE USER INTERFACE



- Customizable user interface allows you to tailor the application to each operator’s tasks and skill set
- Workspaces can be assigned to individual users
- Reduces learning curve and error rate



## NAZDAR SOURCEONE

Nazdar SourceOne is the leading supplier of screen and digital printing equipment, inks and supplies. We maintain relationships with the world’s foremost manufacturers, providing best-in-class technology and quality to specialty graphic printers in the United States, Mexico and Central America. With a network of 17 locations, we deliver localized inventory, superior customer service and expert technical support to the graphic, textile and industrial markets. Learn more at [SourceOne.Nazdar.com](http://SourceOne.Nazdar.com).