



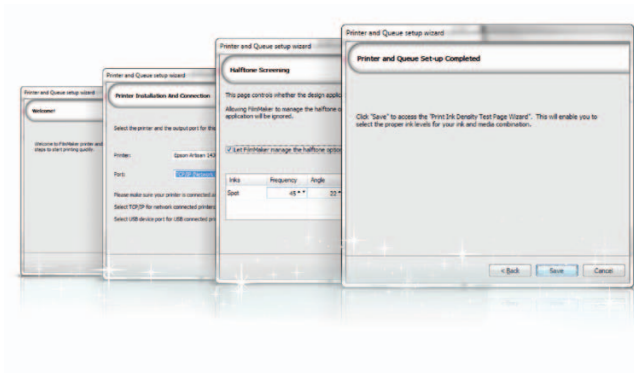
## Inkjet film separation RIP software

Used by more screenprint professionals worldwide than any other inkjet film separation software, FilmMaker provides precisely screened, density-rich films on a wide variety of commonly used inkjet printers of all sizes.





# Ease of Use



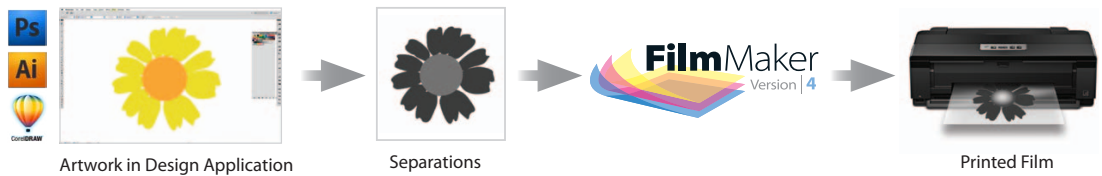
## Easy to set-up, easy to use RIP software

Quick and easy printer, ink, media setup. The printer and queue wizard will get you up and running in minutes without the need for any documentation. Further printing adjustments and customization can be completed afterwards using FilmMakers advanced settings.

## InRIP separations

Select your favorite workflow. FilmMaker provides the ability to separate files directly in the RIP. No need to purchase, learn and use secondary applications. Your choice!

### Separations created in your favorite graphic application



### Separations created directly in FilmMaker



## Unmatched workflow support

### Print Directly from Applications

Send jobs directly from graphics applications such as Corel™, Illustrator™ and PhotoShop™.



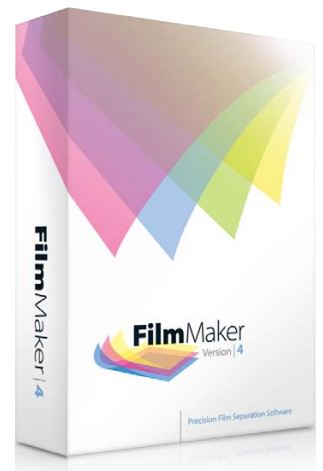
### Drag and drop files

Simply drag a saved file from your desktop directly onto the queue for processing.



### Network printing support

Send jobs from Windows-based or Macintosh workstations to a designated hot folder which automatically forwards it to the appropriate queue for processing.





## Preview, manage all production using Visual Production Manager™

**Simultaneous, multi-queue, multi-printer job management support.** Set up multiple queues that can all be easily viewed using VPM's tab system. Send jobs simultaneously to different queues that are set up with different screening parameters or different printers. FilmMaker processes multiple jobs simultaneously.

The screenshot displays the FilmMaker v4 XL software interface. It features a top menu bar with 'File', 'Queue', 'Jobs', 'Devices', 'Tools', 'View', and 'Help'. Below the menu is a toolbar with various icons. The main window is divided into several sections:

- Easy Access Multiple Queue Tabs:** A tabbed interface at the top showing different job queues: 'Epson 4880 Separations', 'Epson Artisan 1430 Separations', and 'Epson 9800 Separations Multi Black'.
- Print and Pending Job Organizer:** A table listing jobs with columns for Name, Status, Print Mode, and Copies. Jobs include 'Surfs Up.pdf', 'Dragon.eps', and 'Blues Festival.eps', all with a status of 'Pending'.
- "On The Fly" Scheduling:** A central preview area showing a grid of job thumbnails, including 'Surfs Up.pdf' and 'Dragon.eps'.
- Archived Jobs:** A section at the bottom left showing a list of completed jobs like 'Flower Tote.eps' and 'Blues Festival.eps' with a status of 'Complete'.
- One Job Per Page:** A preview of a single page from a job.
- Multiple Jobs Per Page (Nested):** A preview showing multiple job thumbnails nested on a single page.
- Registration Marks:** A close-up of a registration mark on a printed page.
- Selected Job Information, Crop/Registration Marks, Invert, Mirror and Halftone Settings:** A panel on the right showing settings for a selected job, including page number, dimensions, and options for crop, invert, mirror, and halftone.

# Performance

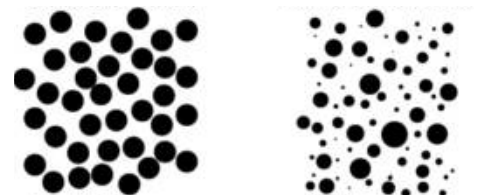
## Highest quality, precision screening

FilmMaker includes CADlink's unique, advanced AM/FM screening algorithm. Jitter™ provides a simple, flexible way in which to modify halftone screens for exceptional print quality in mid-tones, gradients, shadows and highlights.



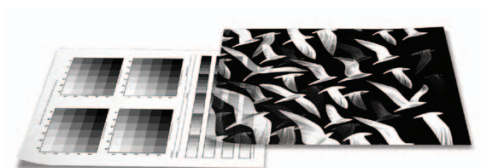
## Variable dot print support

True variable dot support that enables the mix of small, medium and large dots within a job. Unlike other software RIP's that only support one size dot per job, FilmMaker provides precise dot size controls. The end result is the ability to print higher line screens at lower printer resolutions providing significant print speed benefits.



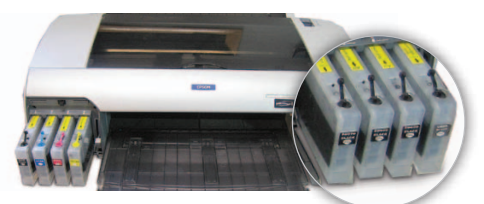
## Density rich films

Select the exact film density required by using the FilmMaker ink density test print. FilmMaker is able to provide optimum ink levels using a variety of ink/media combinations.



## Multiple black ink support

FilmMaker supports a variety of black ink configurations. Use the factory default printer black ink channels or choose to load any ink slot in your printer with third-party black ink cartridges. It's up to you. FilmMaker provides the options to configure your printer as you please.





## Advanced user print and production controls

Designed to make ease of use the first priority, FilmMaker also includes a large number of tools designed for more complex film requirements as well as high volume production.

- Advanced, precision halftone controls
- Rotate/Scale/Mirror/Invert controls
- Page overlay view mode
- View raw data
- Nesting support
- Printer head cleaning/nozzle checks/ink levels
- Automated job costing
- Template function. Set up files with repeatable exact positioning and custom nesting
- Free technical support for current customers\*  
\* New users 6 months, upgrade customers 3 months



### ADDED BONUS

Dye Sublimation printing support on most printers

## Supported Printers

FilmMaker supports most of the latest printers recommended for inkjet film creation and new drivers are added regularly. If you don't see your printer listed here, please visit: [www.cadlink.com/products/filmMaker](http://www.cadlink.com/products/filmMaker) for updated printer listings.

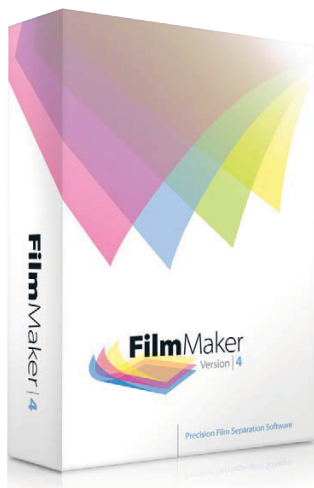
# EPSON

# Canon

# Roland®

# RICOH

Examples of supported printers; **Epson:** Epson 1100, 1400, 1410, 1430, 1500, 1520, 1800, 1900, R2000, 2200, 2400, 2800, 2880, R3000, 3800, 3880, 4000, 4400, 4450, 4800, 4880, 4900, WF 70xx Series, 7400, 7450, WF 75xx Series, 7600, 7700, 7800, 7880, 7890, 7900, 9400, 9450, 9700, 9800, 9880, 9890, 9900, 10000, 10600, 11880; **Roland:** Roland VP 540, RS 640; **Canon:** Canon LP17, 510, 610, 650, 655, 710, 750, 755, 810, 820, IPF 650, IPF 655, IPF 750, IPF 755, IPF 810; ECOJET, **Ricoh:** Ricoh SG-3110, Ricoh GX-3300, Ricoh GX-7000, Ricoh GX-7700.



## FilmMaker Packages

All FilmMaker packages include exactly the same features. The only difference between packages is printer support.

**DTP+** Generally includes all desktop printers and printers up to 17" in width.

**XL+** Generally includes all desktop printers and printers up to and over 17" in width.

DOWNLOAD A FREE TRIAL VERSION OF FILMMAKER TODAY.

Visit [www.cadlink.com](http://www.cadlink.com) for details.



# CADlink

TECHNOLOGY CORPORATION

[www.cadlink.com](http://www.cadlink.com)

FilmMaker is a registered trademark of CADlink Technology Corporation. All other trademarks are the property of their respective owners.

#### UNITED STATES:

500 Main Street  
Clinton, MA 01510  
Tel: 1-800-545-9581  
Fax: (613) 247-1488

#### CANADA:

2150 Thurston Drive  
Ottawa, ON K1G 5T9  
Tel: (613) 247-0850  
Fax: (613) 247-1488

#### EUROPE:

Intech House, Wilbury Way  
Hitchin, Herts, U.K. SG4 0TW  
Tel: ++44(0) 1462-420222  
Fax: ++44(0) 1462-420111

#### COMPATIBLE WITH:

Windows 8

Windows 7

Windows Vista

Windows XP

#### SYSTEM REQUIREMENTS:

	MINIMUM	RECOMMENDED
CPU	Dual Core 2.0 Ghz or higher	Triple Core 2.0 Ghz or higher
HDD	500 GB	750+ GB
RAM	2 GB	4GB

Printed in Canada

THIS PRODUCT IS BROUGHT TO YOU BY



VISIT US ONLINE  
[SourceOne.Nazdar.com](http://SourceOne.Nazdar.com)

CALL US  
888-578-5713

© 2016 Nazdar. All Rights Reserved.  
Specifications subject to change without notice.