



**Pro 30h+**  
Wide Format Inkjet Printer

**Widen** your  
competitive advantage



# Widen your capabilities, versatility and productivity

Widen your competitive advantage with the 3.2-meter EFI™ Pro 30h+ hybrid flatbed/roll-fed LED printer. It prints on a wide variety of substrates for a wide variety of applications with superior image quality at production-level speeds — all with environmentally friendly benefits and a very attractive price point.

With the EFI Pro 30h+ hybrid LED printer, you can take on more jobs, turn them faster, profit from higher-margin graphics, lower your costs, and widen your competitive advantage.

*Offer premium-margin day/night backlit graphics using EFI's industry-leading white ink and multi-layer print capability.*

24	A BACBEOURBEAU	5 min
824	A BANBAROIR	3 min
D20	A PG MARITIM	4 min



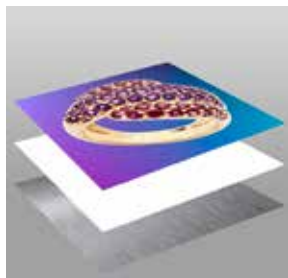
**CENTURION**  
**ELEGANT TIMEPIECES**

# Wide capabilities that keep your competitive edge sharp

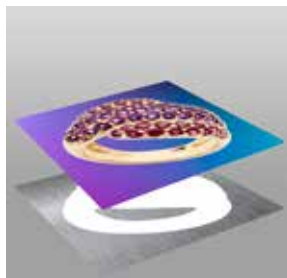
The EFI Pro 30h+ printer is ideal for print providers looking to add wide-format capabilities or upgrade their existing wide-format equipment with direct-to-board and roll-to-roll printing in one platform.

This CMYK printer includes four channels of white ink to produce higher-value prints. Its native 5pL printheads, variable drop grayscale printing, and resolution up to 1200 dpi deliver saturated colors, smooth gradients, and fine text. The magnetic linear drive control ensures precision jetting and quiet operation. And with the high-performance, built-in, Fiery® proServer Core, you'll deliver outstanding image and color quality that make finished prints truly exceptional.

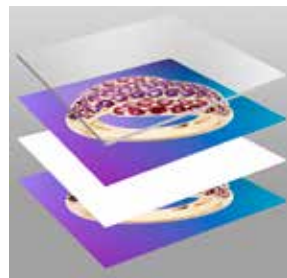
EFI white ink leads the industry in brightness and opacity, and can be imaged like any other color, in grayscale, up to 1200 dpi, and using our multilayer printing with up to five layers in a single pass.



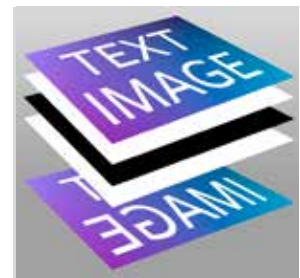
**FLOOD WHITE**



**SHAPE WHITE**



**DAY/NIGHT BACKLIT**



**FIVE-LAYER  
BLOCKOUT GRAPHIC**



## Wide versatility that opens new opportunities

The powerful combination of EFI's hybrid and LED curing technologies will not only help you meet the growing demands for higher quality with quicker turnaround times, but also offer you the ability to print on new and unique substrates, including high-value specialty substrates – opening doors to more applications and unique, creative opportunities.

*Expand into wall coverings, decor and retail signage with the ability to print direct to rigid and flexible substrates with one printer.*

## Wide productivity that keeps the jobs moving

---



With productivity up to 2,530 ft<sup>2</sup> (235 m<sup>2</sup>) per hour, you'll be able to take on more jobs and keep them moving to satisfy customer demand for faster turnarounds.

---



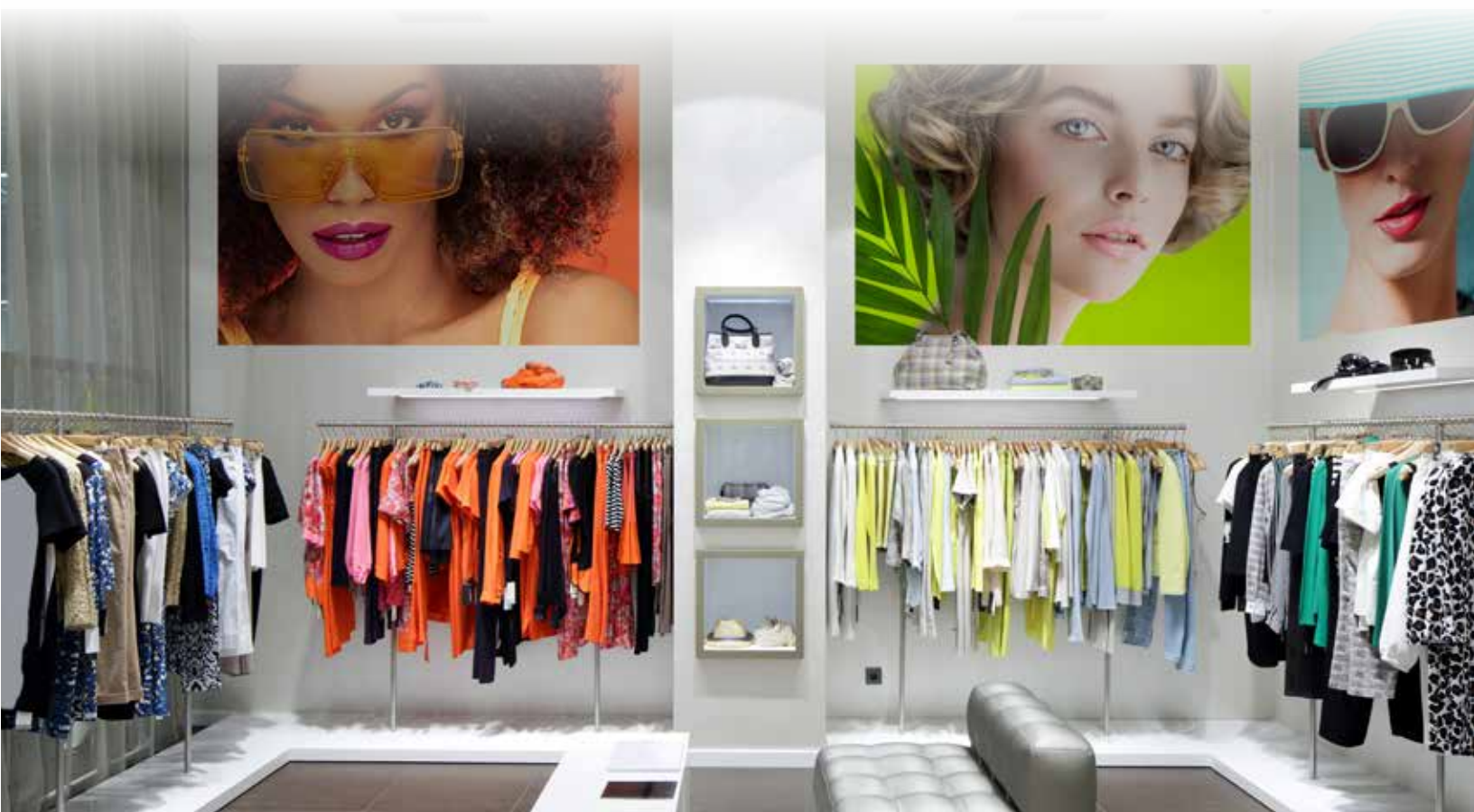
Continuous Board printing is a standard feature and allows you to maximize the printer's full production speeds with large boards or multiple small boards.

---



Changeover from rigid to flexible printing is fast and easy, and the Pro 30h+ printer features dual roll printing for even more throughput.

---



# Wide design features for **true** production environments

Fully enclosed image area keeps production area dust and debris from getting in and around the carriage

Dual touchscreen graphical user interface in front and back of printer for ease of operation in multiple applications

Advanced, six chamber media-platen vacuum system with independent power controls ensures hold down and prevents media movement



+ Improved white ink recirculation system via sub-tanks; circulates more often and more efficiently, resulting in better ink consistency and uniform white prints

+ Improved media tracking with new durable woven belt and automated tracking technology

+ New light-weight media table design for faster assembly and better maneuverability

## EFI's market leading green LED technology



Brilliantly designed “cool cure” LED technology empowers you with the ability to do more for less. Increase your profit opportunity by offering more premium-margin jobs while reducing operating costs and your environmental footprint:

- Meet the growing demands for higher quality with quicker turnaround times while extending your range of supported substrates, including lower cost and added-value specialty media, with lower heat LED lamps
  - Increases uptime and productivity with instant on/off and less maintenance
  - Drives down operating costs with significantly less energy consumption, less waste trying to find the right cure level, and fewer consumable parts
  - Reduces waste with consistent color output and simple operation
  - Satisfies customer requests for a greener print solution with low VOCs, lower power consumption, and less waste and consumables
- 

## Inks made for real results in the real world

Our Genuine EFI ProGraphics+™ Series UV Inks have been custom formulated based on real-world applications. And they're tested and optimized for our wide format printers, so you get the quality and performance you'd expect from Genuine EFI Inks.

- Superb open time - eliminating the need to purge or wipe printheads between jobs
- Improved jetting performance increases uptime and reliability
- Improved adhesion and elongation
- Environmentally friendly: Do not contain heavy metals, virtually no VOC emissions, TPO-free, and are formulated to meet future regulations
- Available in five-liter containers with a twelve-month shelf life

## TECHNICAL SPECIFICATIONS

Media handling		Productivity	
Maximum print area:	126 in (320 cm)	Express	2,530 ft <sup>2</sup> /hr (235 m <sup>2</sup> /hr)
Maximum media thickness:	2 in (5.08 cm)	Distant	1,433 ft <sup>2</sup> /hr (133 m <sup>2</sup> /hr)
Six-zone, user-selectable vacuum system		Production	835 ft <sup>2</sup> /hr (78 m <sup>2</sup> /hr)
Maximum media weight on table	200 lb (90.7 kg)	POP	643 ft <sup>2</sup> /hr (60 m <sup>2</sup> /hr)
Maximum roll weight	440 lb (200 kg)	High Quality	510 ft <sup>2</sup> /hr (47 m <sup>2</sup> /hr)
Maximum roll diameter	12 in (30.5 cm)	Ultra Quality	362 ft <sup>2</sup> /hr (34 m <sup>2</sup> /hr)
		Premium Quality	275 ft <sup>2</sup> /hr (26 m <sup>2</sup> /hr)

Environmental conditions	
Operating temperature:	68 °F to 86 °F (20 °C to 30 °C)
Humidity:	40% to 80% (non-condensing)
Dimensions (W x D x H):	227 in x 76 in x 77 in (575 cm x 192 cm x 194 cm)
Weight:	Approximately 6,835 lb / 3,100 kg uncrated
Electrical:	200–240 VAC, single phase, 50/60 Hz, 32 Amps

### Fiery digital front end

#### Ships with an embedded Fiery® proServer Core digital front end that contains:

- Fiery XF server software for Windows® include:
  - Spot Color Option
  - Color Verifier Option
  - Cut Marks Option
  - Color Profiler Option
- Unlimited macOS® or Windows installations of Fiery Command WorkStation® with up to 10 concurrent connections
- One-year Fiery proServer hardware and Fiery XF software warranty

Optional Fiery IQ™ suite of cloud applications to make data driven decisions to improve ROI, minimize cost, maximize profit, and boost revenue.

### Formats

All popular desktop files formats, including PostScript® 3™, EPS, TIFF, PDF, and RGB/CMYK

## Let's be brilliant. Together.

We understand you want breakthrough technologies to lead you through your digital journey. That's why we're passionate about driving your business growth with a scalable portfolio of products, solutions, services, support, and world-class partnerships for the manufacturing of signage, packaging, textiles, ceramic tiles, and building materials with a wide range of printers and inks. Our unwavering commitment is to increase your profits, cut costs, improve productivity, and optimize efficiency — job after job, year after year. We're obsessed with your success. And we definitely believe we have the right people, technology and experience to help your business achieve its goals. Visit [www.efi.com](http://www.efi.com) or send an email to [info@efi.com](mailto:info@efi.com) for more information.



Nothing herein should be construed as a warranty in addition to the express warranty statement provided with EFI products and services.

BDR, Cretachrom, Cretaprint, the Cretaprint logo, Cretaprinter, Cretaroller, Divisional Graphics, Distancing Graphics, EFI, the EFI logo, Electronics For Imaging, EFInsight, FabriVU, Fast-4, Inèdit, Inkintensity, Inkware, neoCatalog, neoStampa, neoTextil, PressVu, ProGraphics, Reggiani AQUA Prime, Reggiani AQUA Plus, Rialco, Riaplas, SDC, SafeGuard Graphics, UltraDrop, UltraPress, UltraTex, UltraVu, UV Series 50, VUTEK, and the VUTEK logo are trademarks or registered trademarks of Electronics For Imaging, Inc. and/or its wholly owned subsidiaries in the U.S. and/or certain other countries.

All other terms and product names may be trademarks or registered trademarks of their respective owners and are hereby acknowledged.

© 2025 ELECTRONICS FOR IMAGING, INC. ALL RIGHTS RESERVED. | [WWW.EFI.COM](http://WWW.EFI.COM)

AC\_110\_03\_25\_US

THIS PRODUCT IS BROUGHT TO YOU BY

**NAZDAR**  
SOURCEONE

VISIT US ONLINE  
[SourceOne.Nazdar.com](http://SourceOne.Nazdar.com)

CALL US  
888-578-5713

© 2025 Nazdar. All Rights Reserved.  
Specifications subject to change without notice.