

Operating Rate
62%

Operating Rate
73%

Operating Rate
85%

Operating Rate
56%

Operating Rate
73%

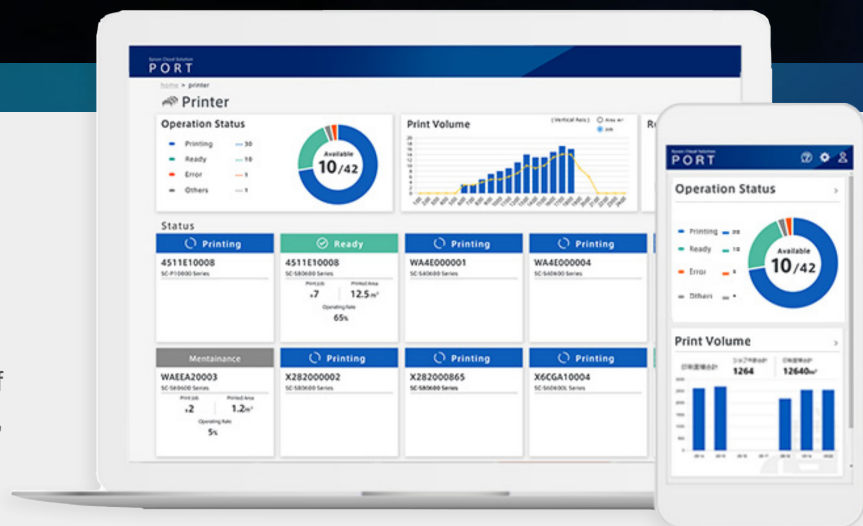
EPSON® CLOUD SOLUTION PORT

Remote Monitoring System for Professional Printers

Connect. Optimize. Grow.

Take control of your printer fleet and achieve next-level productivity with the Epson Cloud Solution PORT — a breakthrough platform for easy, remote monitoring of Epson professional printers.

Designed with simplicity and security in mind, the Epson Cloud Solution PORT provides a live view of your printer fleet production¹, equipment utilization, and service information to optimize printer workflow and maximize operational efficiency.



Remote Monitoring¹

Monitor the live status of your entire printer fleet, output production rates, printer status, errors and equipment utilization—anytime, anywhere.



Production Efficiency Tracking and Reporting

Quickly view key performance data, including total production efficiency, uptime, and printer usage, to optimize production efficiency.



Fleetwide Printer Management

Track your fleet of printers regardless of where they are in the world, as long as they are connected to the Internet.



Mobile Access

Optimized mobile website and app allow for easy, remote tracking of printer fleet while on the go.



Dashboard Tracking

Create and customize your in-shop dashboard to internally communicate key performance metrics to employees.



Secure and Encrypted

Data stream and cloud are encrypted end-to-end to protect customers' privacy and usage data.



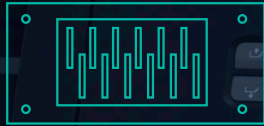
Expedited Service Response

Epson support helps reduce downtime with fast, remote troubleshooting.

EPSON®
EXCEED YOUR VISION

1. All features of this system require an active Internet connection and use of a supported browser.





ENGINEERED TO
**LAST
FOR
YEARS**



EPSON® USER-REPLACEABLE PRINT HEADS

Epson PrecisionCore® Micro TFP industrial print head is engineered to last for years*

Print Head Replacement Made Simple

-  Ink discharging before replacement
 -  Physical replacement – no tools required
 -  Automatic print head adjustment by software
-
-  Total replacement time 1–1:15 hours

Epson Print Head Cost

\$695 when registered with PORT

\$1,395 without PORT registration

Epson Extended Service Agreements

PLAN	SKU	PRICE
1 Year**	EPPR5070FS1**	\$2,495
1 Year Self Service	EPPR5070SS1	\$1,995
2 Year Self Service	EPPR5070SS2	\$3,295
4 Year Self Service	EPPR5070SS4	\$5,695

Print heads are not included under self service plans. Cost of print head and labor for print head replacement is the customer's responsibility

Print heads ordered through Epson PORT software

Save over **\$500/year** with a 4 year plan vs. a 1 year plan.

*Epson's statements about print head reliability levels are only estimates based on normal use of the printer. Normal use is defined as printing six hours per day at nine pass mode for 250 days per year. These statements are not warranties of Epson's printers or print heads, and the only warranties for printers or print heads are the limited warranty statements for each printer or print head.

**Print head replacement part is not included, customer must pay for print head and labor.

EPSON®
EXCEED YOUR VISION

THIS PRODUCT IS BROUGHT TO YOU BY



VISIT US ONLINE
SourceOne.Nazdar.com

CALL US
888-578-5713

© 2021 Nazdar. All Rights Reserved.
Specifications subject to change without notice.