

THE NEXT GENERATION OF PRINT

UV · ECO-SOL · RESIN





Print with Extra Confidence

Global print material providers, 3M and Avery Dennison offer warranties for graphics printed with the VG3 and SG3— with Avery Dennison offering warranty coverage for same day print, lamination and wrapping.



Protect Your Investment

Take your business forward with complete peace-of-mind thanks to an industry-best Two-year Trouble-Free Warranty, plus renowned service and support. Available Roland DG Care service contracts can extend your coverage even further.

TrueVIS™ LG Series UV Printer/Cutters



Model	Sizes
LG-300	30"
LG-540	54"
LG-640	64"

- Professional-level UV-LED printer/cutters offer outstanding image quality, excellent print speeds, and wide-gamut inks for unsurpassed graphic results
- Dual, staggered printheads and specially formulated CMYK, Gloss, and White UV inks ensure vibrant, detailed prints and allow for unique special effects
- Ideal for a range of applications, including backlits, window graphics, displays, labels/decals, packaging, vehicle graphics, and more

INK CONFIGURATIONS

CMYK, Red, Orange, White, Gloss, and optional Primer

Two-year Warranty*

TrueVIS™ MG Series UV Printer/Cutters



Model	Sizes
MG-300	30"
MG-540	54"

- Value-packed, easy-to-use UV-LED printer/cutters deliver TrueVIS quality and performance at an entry-level price
- Specially formulated wide-gamut UV inks for stunning color, exceptional detail, and eye-catching special effects
- Allow small- to medium-sized print operations to offer a wide variety of applications, ranging from labels, backlits, and window graphics to packaging, vehicle graphics, and retail displays

INK CONFIGURATIONS

CMYK, Red, Orange, White, Gloss, and optional Primer

Two-year Warranty*

TrueVIS™ VG3 Series Eco-Sol Printer/Cutters



Model	Sizes
VG3-540	54"
VG3-640	64"

- Professional-level printer/cutters with advanced features and expanded gamut combine outstanding productivity and ease of use with amazing image quality and color vibrancy
- Four FlexFire™ printheads and specially formulated TR2 inks ensure accurate, on-color, on-brand custom graphics. Eight-color ink configurations provide a wider gamut for superior color output and smoother transitions
- Increased productivity through enhanced features, such as a 7-inch LCD touch-panel control screen, auto-calibration, and other intuitive automated tools

INK CONFIGURATIONS

CMYK, Light Cyan, Light Magenta, Light Black, Orange, Green, White

Two-year Warranty*

TrueVIS™ SG3 Series Eco-Sol Printer/Cutters



Model	Sizes
SG3-300	30"
SG3-540	54"

- Value-packed printer/cutters make the latest TrueVIS technology accessible to print providers who are just starting or seeking to build their businesses
- True Rich Color 3 preset improves brand reproduction and ensures ultra-vivid color with smooth transitions. Efficient operation lets you produce high-quality signs, stickers, labels, vehicle wraps, and more at a very low ink cost per sq/ft.
- User-focused enhancements with a 7-inch LCD touch-panel control screen, auto-calibration, and other automated tools

INK CONFIGURATIONS

CMYK

Two-year Warranty*

TrueVIS™ AP-640 Resin Printer



Model	Sizes
AP-640	64"

- Piezo printheads arranged in a dual, staggered formation with an optimizer printhead and a dedicated CMYK printhead allow for a finer dot, delivering more precise color and image results
- Redefining resin printing with high color saturation on a wide range of materials, including PVC and non-PVC media, vinyl, paper, film, and more
- GREENGUARD Gold certified TrueVIS Resin Ink dries quickly, is environmentally friendly, and yields vibrant color and outstanding detail

INK CONFIGURATIONS

CMYK

Two-year Warranty*

TA Resin Inks

New TA Resin Inks offer the quick-drying, high-productivity, and environmentally friendly advantages of resin with unsurpassed TrueVIS image quality. High color saturation enables you to produce more output with less ink for maximum cost effectiveness. Plus, TA Resin Inks are GREENGUARD Gold certified for low VOC emissions.

TR2 Eco-Sol Inks

Designed for Roland DG's TrueVIS eco-solvent printer/cutters, GREENGUARD Gold certified TR2 Inks take color vibrancy and image detail to a higher level. New Orange and Green options widen the color gamut and increase color-matching accuracy. TR2 inks are also durable and scratch resistant for long-lasting graphic results.

ECO-UV Inks

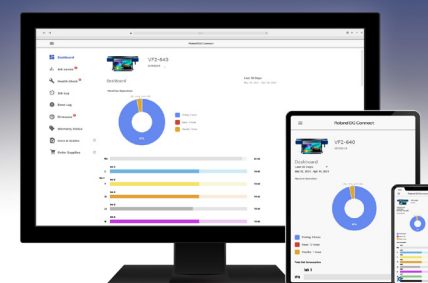
TrueVIS LG and MG series UV printer/cutters use fast-drying, wide-gamut EUV5 inks that image beautifully, stretch without cracking, and adhere well to both uncoated and coated media. New Orange and Red inks expand creative opportunities, while White and Gloss specialty inks allow for unique special effects.



Included VersaWorks 6 RIP Software

Effortlessly manage your print output with the latest edition of the world's most popular RIP software. In addition to improved speed and file handling, a few of the many benefits include:

- Five print queues and hot folders with unlimited queue settings
- Cropping, tiling, nesting, extensive color libraries and other popular features
- New color-matching features for printing, scanning and transferring color values to multiple Roland DG devices



Roland DG Connect App

Available for your desktop and smart devices, Roland DG Connect is a monitoring assistant that helps you gain a detailed understanding of your entire TrueVIS print operation. Keep your device running at optimum print performance, quickly monitor your ink usage, view your wiper lifetime and levels of liquid waste, and many more essential features.

TrueVIS

Large-Format Inkjet Printers and Printer/Cutters

Specifications										
	Ink Type	Max. Material Width	Max. Print Height	Printer Type	Max. Resolution	Max Speed	Ink Configurations	Ink Capacity	Cutting Speed	Cutting Force
LG-640	EUV5 Ink	64 in	1 mm	UV Print/Cut	1,200 dpi	343 sqft/hr at 720 × 600 dpi*	Up to 8 colors: CMYK, Red, Orange, White, Gloss and optional Primer	8 pouches (750 mL)	0.39–11.8 in/s	30–500 gf
LG-540	EUV5 Ink	54 in	1 mm	UV Print/Cut	1,200 dpi	315 sqft/hr at 720 × 600 dpi*	Up to 8 colors: CMYK, Red, Orange, White, Gloss and optional Primer	8 pouches (750 mL)	0.39–11.8 in/s	30–500 gf
LG-300	EUV5 Ink	30 in	1 mm	UV Print/Cut	1,200 dpi	232 sqft/hr at 720 × 600 dpi*	Up to 8 colors: CMYK, Red, Orange, White, Gloss and optional Primer	8 pouches (750 mL)	0.39–11.8 in/s	30–500 gf
MG-640	EUV5 Ink	54 in	1 mm	UV Print/Cut	1,440 dpi	150 sqft/hr at 720 × 720 dpi*	Up to 8 colors: CMYK, Red, Orange, White, Gloss and optional Primer	8 cartridges (500 mL, 220 mL only for Wh)	0.39–11.8 in/s	30–500 gf
MG-300	EUV5 Ink	30 in	1 mm	UV Print/Cut	1,440 dpi	120 sqft/hr at 720 × 720 dpi*	Up to 8 colors: CMYK, Red, Orange, White, Gloss and optional Primer	8 cartridges (500 mL, 220 mL only for Wh)	0.39–11.8 in/s	30–500 gf
VG3-640	TR2 Ink	64 in	1 mm	Eco-solvent Print/Cut	1,200 dpi	327 sqft/hr at 600 × 600 dpi*	8-color CMYKkLkOrGr 4-Color CMYK (×2)	8 pouches (500 mL)	0.39–11.8 in/s	30–500 gf
VG3-540	TR2 Ink	54 in	1 mm	Eco-solvent Print/Cut	1,200 dpi	310 sqft/hr at 600 × 600 dpi*	8-color CMYKkLkOrGr 4-color CMYK (×2)	8 pouches (500 mL)	0.39–11.8 in/s	30–500 gf
SG3-540	TR2 Ink	54 in	1 mm	Eco-solvent Print/Cut	1,200 dpi	105.5 sqft/hr at 600 × 600 dpi*	4-color CMYK	4 pouches (500 mL)	0.39–11.8 in/s	30–500 gf
SG3-300	TR2 Ink	30 in	1 mm	Eco-solvent Print/Cut	1,200 dpi	73 sqft/hr at 600 × 600 dpi*	4-color CMYK	4 pouches (500 mL)	0.39–11.8 in/s	30–500 gf
AP-640	TA Ink	64 in	1 mm	Resin Print-only	1,200 dpi	313 sqft/hr at 600 × 600 dpi*	4-color CMYK	4 pouches (700 mL)	–	–

*In CMYK



Build Your Business with Industry-Best Warranty, Service and Support

With the most advanced and reliable machines, backed by unmatched customer service and technical support, Roland DGA keeps you producing and profiting. For additional peace-of-mind, TrueVIS devices are also supplied with a Two-Year Trouble-Free Warranty.*

*Registration within 60 days of purchase and exclusive, continuous use of Roland inks is required to qualify for the second year of warranty coverage.

SCAN ME!
For detailed features and specifications



or visit www.rolanddga.com/TrueVIS

Get social with us.



FOR MORE INFORMATION OR TO FIND A DEALER NEAR YOU, CALL 800-542-2307 OR VISIT WWW.ROLANDDGA.COM/TRUEVIS
 ROLAND DGA CORPORATION | 15363 BARRANCA PARKWAY | IRVINE, CALIFORNIA 92618-2216 | 800.542.2307 | 949.727.2100
 RDGA-TRUEVIS-07 January 2023