

## 10989PFXLG Epic Liquid Gold

Wilflex™ Epic Liquid Gold is non-phthalate plastisol ink specially formulated to produce an opaque, vibrant metallic shine effect. Epic Liquid Gold is ready for use straight out of the container and can be used with both flat and high density graphics.

### Highlights

- ▶ Super-shine metallic ink.
- ▶ Can be used straight out of the container.
- ▶ Excellent stretch properties.
- ▶ Epic Liquid Gold can be printed on all colored fabrics with dark colored fabrics giving best results.

### Printing Tips

- ▶ Can be printed through flat screen meshes or high density films.
- ▶ Can be printed direct to garment or over an underbase.
- ▶ Single print or print-flash-print can be used to apply ink to fabric.
- ▶ Best results achieved using recommended mesh counts.
- ▶ For best results, evaluate the entire handling of garments that contain metallic inks including; printing, curing, stacking hot shirts and packaging of hot shirts, and handling where abrasion to the surface may occur.

### Compliance

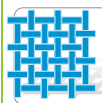
- ▶ Non-phthalate.
- ▶ For individual compliance certifications, please visit [www.wilflex.com/compliance](http://www.wilflex.com/compliance).

### Precautions

- ▶ Perform fusion tests before production. Failure to cure ink properly may result in poor wash fastness, inferior adhesion and unacceptable durability. Ink gel and cure temperatures should be measured using a Thermoprobe placed directly in the wet ink film and verified on the production run substrate(s) and production equipment. It is the responsibility of the printer to determine that the correct ink has been selected for a specific substrate and the application processes meet your customer's standards or specifications.
- ▶ Avoid over flashing as it can result in poor intercoat adhesion of colors.
- ▶ Use an appropriate low-bleed underbase on polyester fabrics.
- ▶ Pretest all fabrics for dye migration.
- ▶ Metallic inks reflect infrared heat and a forced air dryer is recommended to achieve proper cure of the entire ink deposit.
- ▶ Metallic inks are very susceptible to abrasion of the ink surface. This may result in particles rubbing off, discoloration and/or dulling of the image—even if the ink is fully cured.
- ▶ Avoid contact between metallic inks and other inks that have a sticky surface (hot or cold). Metallic flakes transfer onto sticky surfaces even if the ink is cured.
- ▶ For best results, follow guidelines for proper cure of entire ink film. Hand wash garments in cold water with a non-phosphate soap, such as Woolite. Avoid using a tumble dryer. Hang or air dry garments to avoid surface abrasion.
- ▶ Label garments with suggested wash instructions.
- ▶ Stir plastisols before printing.
- ▶ Do not dry clean, bleach or iron printed area.
- ▶ **NON-CONTAMINATION OF EPIC INKS:** Do not add or mix non-Epic inks, additives or extenders with Epic inks. All buckets, palette knives, stirring apparatus, squeegees, flood bars and screens must be cleaned properly and free of phthalates and pvc containing inks. Non-phthalate emulsions and pallet adhesives must be used. Failure to follow these precautions may cause phthalate contamination in violation of consumer protection laws and regulations.
- ▶ Any application not referred in this product information bulletin should be pre-tested or consultation sought with Wilflex Technical Services Department prior to printing.
- ▶ Email: [techserviceswilflex@polyone.com](mailto:techserviceswilflex@polyone.com)



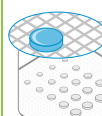
**Fabric Types**  
100% cotton, cotton blends



**Mesh**  
Counts: 86-125 t/in (34-49 t/cm)  
Tension: 25-35 n/cm<sup>2</sup>



**Squeegee**  
Durometer: 60-70, 60/90/60  
Edge: Square, Sharp  
Stroke: Medium-Fast  
*\*Do not use excess squeegee pressure.*



**Non-Phthalate Stencil**  
Direct: 2 over 2  
Capillary/Thick Film: up to 400 microns  
Off Contact: 1/16" (.2cm)



**Flash & Cure Temperatures**  
Flash: 220°F (105°C)  
Cure: 300°F (150°C)



**Pigment Loading**  
EQ: 10% max  
MX: N/A  
PC: 10% max  
*\*All percentages listed at % by weight.*



**Epic Additives**  
Extender: N/A  
Reducer: Epic Viscosity Buster-3% max  
*\*All percentages listed at % by weight.*



**Storage**  
65-90°F (18-32°C)  
Avoid direct sunlight.  
Use within one year of receipt.



**Clean Up**  
Ink degradent or press wash.



**Health & Safety**  
MSDS: [www.polyone.com](http://www.polyone.com) or  
Contact your local CSR.