

19202PFX Epic Print Black

Wilflex™ Epic Print Black is a general purpose- ready to use non-phthalate ink. Epic Print Black exhibits a good balance of properties inclusive of soft hand, good color saturation, and good wash durability.

Highlights

- ▶ Enjoy long or short runs. Maintain medium to heavy body throughout the run.
- ▶ Build-up resistant.
- ▶ Excellent color vibrancy.
- ▶ Easily printed with both manual and automatic presses.
- ▶ Low cure, Fast flashing.

Printing Tips

- ▶ A heavy flood stroke that fully fills the open areas of the stencil with ink is recommended.
- ▶ Best results achieved using recommended mesh counts.
- ▶ For fine line graphics use 230-305 t/in (90-120 t/cm) mesh. Use 110-160 t/in mesh (43-62t/cm) as standard for large coverage and non-detailed graphics.
- ▶ Use consistent, high-tensioned screen mesh to optimize performance properties.

Compliance

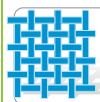
- ▶ Non-phthalate.
- ▶ For individual compliance certifications, please visit www.wilflex.com/compliance.

Precautions

- ▶ Perform fusion tests before production. Failure to cure ink properly may result in poor wash fastness, inferior adhesion and unacceptable durability. Ink gel and cure temperatures should be measured using a Thermoprobe placed directly in the wet ink film and verified on the production run substrate(s) and production equipment. It is the responsibility of the printer to determine that the correct ink has been selected for a specific substrate and the application processes meet your customer's standards or specifications.
- ▶ Pre-test all fabrics for desired properties before beginning production printing.
- ▶ Stir plastisols before printing.
- ▶ Do not dry clean, bleach or iron printed area.
- ▶ **NON-CONTAMINATION OF EPIC INKS:** Do not add or mix non-Epic inks, additives or extenders with Epic inks. All buckets, palette knives, stirring apparatus, squeegees, flood bars and screens must be cleaned properly and free of phthalates and pvc containing inks. Non-phthalate emulsions and pallet adhesives must be used. Failure to follow these precautions may cause phthalate contamination in violation of consumer protection laws and regulations.
- ▶ Any application not referred in this product information bulletin should be pre-tested or consultation sought with Wilflex Technical Services Department prior to printing.
- ▶ Email: techserviceswilflex@polyone.com



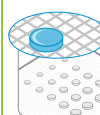
Fabric Types
100% cotton, some blend *Not suitable for all nylon substrates. Pre-test prior to production.



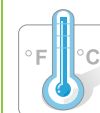
Mesh
Counts: 110 -305 t/in (43-120 t/cm)
Tension: 25-35 n/cm²



Squeegee
Durometer: 60-80, 70/90/70
Edge: Square, Sharp
Stroke: Medium
**Do not use excess squeegee pressure.*



Non-Phthalate Stencil
Direct: 2 over 2
Capillary/Thick Film: N/A
Off Contact: 1/16" (.2cm) Print on-contact



Flash & Cure Temperatures
Flash: 160-180°F (70-80°C)
Cure: 300°F (150°C)



Pigment Loading
EQ: N/A
MX: N/A
PC: N/A
**All percentages listed at % by weight.*



Epic Additives
Extender: N/A
Reducer: Epic Viscosity Buster-1% max
**All percentages listed at % by weight.*



Storage
65-90°F (18-32°C)
Avoid direct sunlight.
Use within one year of receipt.



Clean Up
Ink degradent or press wash.



Health & Safety
MSDS: www.polyone.com or
Contact your local CSR.