

15340PFX Epic Yellow Sparkle

Wilflex™ Epic Yellow Sparkle is a non-phthalate plastisol ink specially formulated to produce subtle sparkle effects with high gloss and excellent durability.

Highlights

- Dazzling sparkle effects.
- High gloss finish.
- Excellent durability.
- Can tint using Epic PCs to create many custom colors and effects.

Printing Tips

- Use consistent, high-tensioned screen mesh to optimize performance properties.
- Due to the reflective properties of glitter and the heavy deposit of ink, careful evaluation of dryer setting is recommended. Dwell times may need to be lengthened.
- Although Epic Yellow Sparkle was designed to be direct printed, the ink may be transferred, using a gel temperature of 170°F (75°C), a transfer press temperature of 375°F (190°C) and a cold-peel process.

Compliance

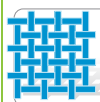
- Non-phthalate.
- For individual compliance certifications, please visit www.wilflex.com/compliance.

Precautions

- Perform fusion tests before production. Failure to cure ink properly may result in poor wash fastness, inferior adhesion and unacceptable durability. Ink gel and cure temperatures should be measured using a Thermoprobe placed directly in the wet ink film and verified on the production run substrate(s) and production equipment. It is the responsibility of the printer to determine that the correct ink has been selected for a specific substrate and the application processes meet your customer's standards or specifications.
- Avoid over flashing as it can result in poor inter-coat adhesion of colors.
- Pretest all fabrics for dye migration.
- Stir plastisols before printing.
- Do not dry clean, bleach or iron printed area.
- **NON-CONTAMINATION OF EPIC INKS:** Do not add or mix non-Epic inks, additives or extenders with Epic inks. All buckets, palette knives, stirring apparatus, squeegees, flood bars and screens must be cleaned properly and free of phthalates and pvc containing inks. Non-phthalate emulsions and pallet adhesives must be used. Failure to follow these precautions may cause phthalate contamination in violation of consumer protection laws and regulations.
- Any application not referred in this product information bulletin should be pre-tested or consultation sought with Wilflex Technical Services Department prior to printing.
- Email: techserviceswilflex@polyone.com



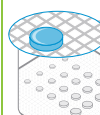
Fabric Types
100% cotton, cotton blends, some synthetics



Mesh
Counts: 24-61 t/in (9-24 t/cm)
Tension: 25-35 n/cm²



Squeegee
Durometer: 60/90/60
Edge: Slightly Rounded
Stroke: Medium
**Do not use excess squeegee pressure.*



Non-Phthalate Stencil
Direct: 2 over 2
Capillary/Thick Film: N/A
Off Contact: 1/16" (.2cm)



Flash & Cure Temperatures
Flash: 170°F (75°C)
Cure: 300°F (150°C)



Pigment Loading
EQ: N/A
MX: N/A
PC: 1-2% recommended
**All percentages listed at % by weight.*



Epic Additives
Extender: N/A
Reducer: Epic Viscosity Buster-3% max
**All percentages listed at % by weight.*



Storage
65-90°F (18-32°C)
Avoid direct sunlight.
Use within one year of receipt.



Clean Up
Ink degradent or press wash.



Health & Safety
MSDS: www.polyone.com or
Contact your local CSR.