

Textile Cleaning Gun



Model SG-5000

Operating Instructions

Whats in The Box:



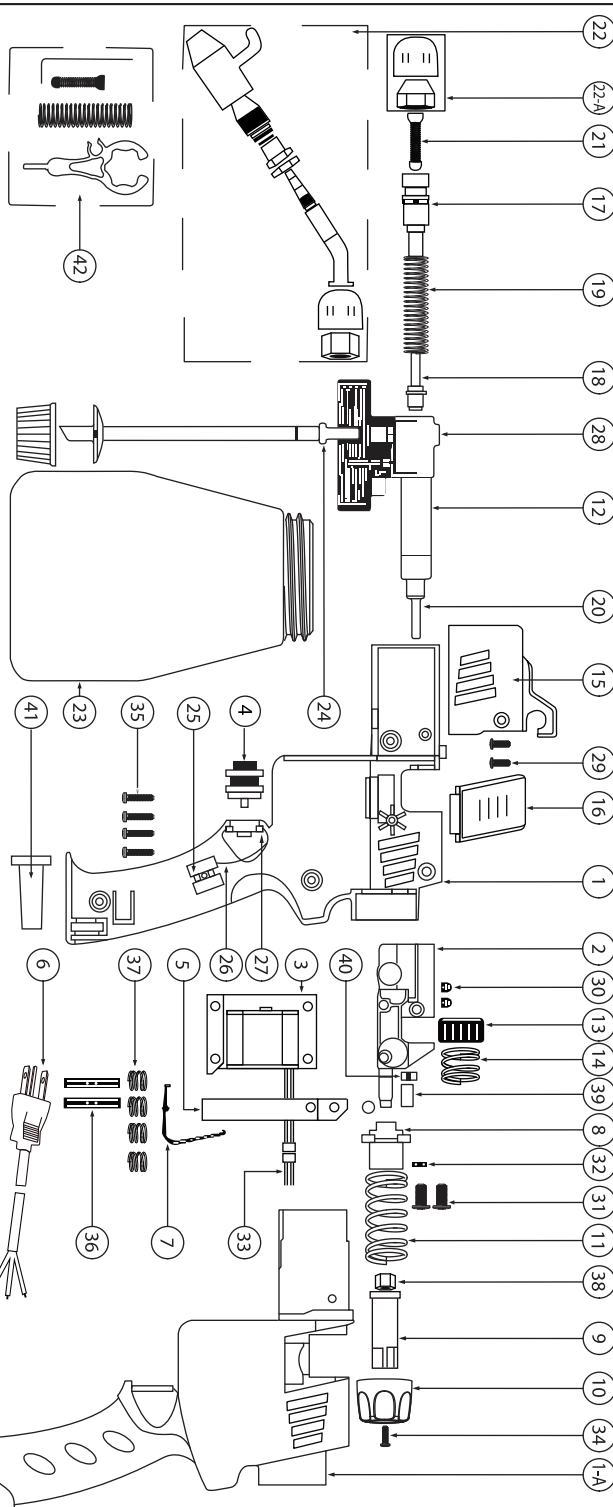
- | | |
|----------|-----------------------------------|
| A | 1 - Spot Cleaning Gun |
| B | 1 - Volume Control Spring (EXTRA) |
| C | 1 - Delivery Valve Spring (EXTRA) |
| D | 1 - Adjustable Nozzle Wrench |
| E | 1 - Allen Wrench |

WARNING

110 volt electric gun - DO NOT
use with flammable liquids

Chemical Consultants
INCORPORATED

1850 Wild Turkey Circle Corona CA 92880 USA
951/735-5511 FAX 951/735-7999 www.ccidom.com



Parts In Stock

1. Housing
- 1-A. Housing cover
2. Motor support
3. Armature
4. Trigger switch
5. Armature
6. Cable with plug
7. Armature spring
17. Pump cylinder
18. Piston

Special Order

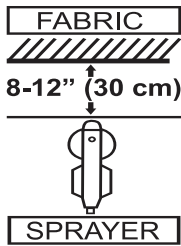
19. Piston spring
21. Delivery valve spring
22. Adjustable nozzle head
24. Suction pipe with strainer
26. Trigger switch power cord
8. Control knob support
9. Control knob bolt
10. Control knob
11. Control knob spring
12. Gun unit part
13. Adjusting roller
14. Adjusting roller spring
15. Hook
16. Cover
20. Intermediate push rod
- 22-A. Nozzle Head
23. Oil container
25. Terminal block
27. Protection cover
28. Pump cylinder locking screw
29. Hook locking screw
30. Gun unit locking
31. Control knob support locking screw
32. Washer
33. Ground wire
34. Control knob locking screw
35. Cover locking screw
36. Bolt
37. Buffer spring
38. Buffer part
39. Washer
40. Oil absorbing felt
41. Cover for power cord
42. Accessory pack

SPECIFICATIONS

Frame Type	Polypropylene Frame
Tip Angle	10 Degree Curve
Tip Type	Plate Brass
Weight	2.75 Lbs.
Voltage	110 Volts / 60 Hz
Hook Assembly	U-hook Assembly
Output	3.7 Oz.. (110 Cc) Per Minute
Power Dissipation	50 Watts
Capacity	30 Oz. (900 Cc)
Nozzle	.012" (0.3 Mm)
Solution	*For use with Non-flammable and Non- Aqueous products only.

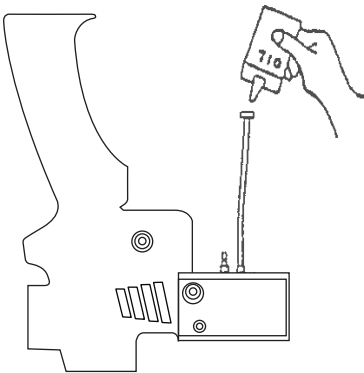
OPERATION

To prevent fabric from being damage while spryaing hold the SG-5000 sprayer at at distance of about 8-12" (20-30 cm) from fabric.



MAINTENANCE

When you have finished spraying more than one week, or before storing the unit empty any remaining residue out of the container. Pour some lubricating oil on the suction tube to trigggle switch lubricating cylinder.



CAUTION

This unit releases a high pressure stream of product. Keep tip of gun pointed in safe direction at all times. Keep hands and arms away from high pressure stream at all times. Wear eye protection at all times.

***WARNING

DO NOT use this gun with flammable liquids. 110 volt electric motor has potential of igniting flammable liquids.

TROUBLESHOOTING

Problem	Possible Cause	Solution
Motor does not operate but humming sound remains.	When unit has stopped spraying for a long time and cylinder is not always lubricated	Take off the cylinder and nozzle and use a .125" (3.5 mm) round stick to knock this side of nozzle to release the piston. Then clean and lubricate the piston.
The nozzle split or no liquid feeding during spraying.	Impurities were in the cylinder, causing nozzle to be blocked.	Take off nozzle and use blower to discharge impurities.
Motor operating, but no liquid feeding.		1) Check the valve on nozzle. 2) Check if suction is fixed. 3) Check if control knob is adjusted to right position. 4) Replace cylinder if it is

1

- Fill spot gun cup with a non-flammable spot cleaner chemical.

2

- Plug Gun into a 110V outlet.
- Point in a safe direction.
- Pull trigger to dispense liquid.

3

NOTE: See back for important Instructions on how to properly set up your spot gun.

- Turning clockwise will decrease pressure and the amount of dispensing liquid.
- Turning knob counter clockwise will increase pressure and the amount of dispensing liquid.

4

- Adjust Spray tip
- Clockwise creates high pressure jet
- Counter clockwise creates fan/mist

WARNING: DO NOT USE FLAMMABLE LIQUIDS IN THE ELECTRIC GUN.
WARNING: DO NOT USE WATER IN THE ELECTRIC GUN.
WARNING: EXTREMELY HIGH PRESSURE JET OF FLUID. KEEP HANDS CLEAR AND POINT IN A SAFE DIRECTION.