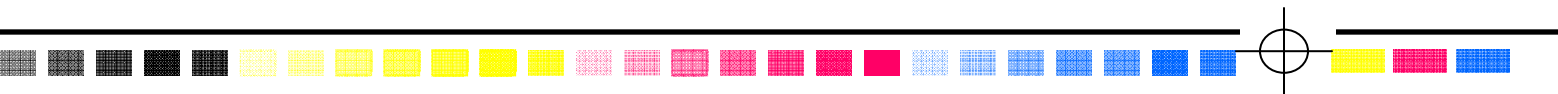


IMS Blockout



Blockout Products

IMS701 / IMS702 / IMS715

ImageStar Blockout products are used both after the screen is exposed and dried; or on press to fill pin holes and open mesh areas. These products are water soluble; air dry and resist most solvent inks and cleaners. They will break down easily with water and are not recommended for water based inks.

Processing Recommendations:

- Apply a small amount of *ImageStar* Blockout to the print side of exposed screen after emulsion has dried.
- Use card or plastic squeegee applicator to evenly fill in edges between emulsion and frame.
- Use a brush to fill in pin holes or small, uncoated areas.
- After applying a generous amount, allow the screen to dry. The screen is now ready for press. To speed up drying, place the screen in a drying cabinet.

Product Highlights:

- ***IMS701 Premium Blockout***
This product is red in color and fast drying. It can be used on all stencil systems and is durable for long print runs.
- ***IMS702 Economy Blockout***
This blue economical blockout is medium drying and can be used on all stencil systems and medium print runs.
- ***IMS715 Classic Advance Red Blockout***
This is the fastest drying blockout in the line and the most durable. It has been used for years as the staple in the market. This product out-performs most products available on the market.

Packaging:

- 1 Gallon
- 5 Gallon
- 55 Gallon

Nazdar stands behind the quality of this product. While technical information and advice on the use of this product is provided in good faith, the User bears sole responsibility for selecting the appropriate product for their end-use requirements. This product has not been tested for application by any other method than described. Any liability associated with the use of this product is limited to the value of the product purchased from Nazdar. Nazdar recommends checking with your local wastewater district prior to washing any chemicals or ink products into the drain.