

 Roland®

TrueVIS SG2 Series

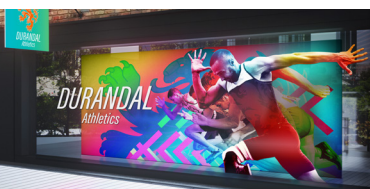
Large-Format Inkjet Printer/Cutters

BIG BUSINESS PERFORMANCE
SMALL BUSINESS PRICE



ALL THE COLOR, PERFORMANCE AND RELIABILITY YOU NEED TO BUILD A SUCCESSFUL BUSINESS

Built to build your business, TrueVIS SG2 series printer/cutters are everything you'd expect to find in a top-of-the-line machine, but without the higher price tag. Available in 64", 54" and 30" models, they feature new TR2 inks for greater color output, smart new print/cut features with automated pinch rollers, and 3M and Avery Dennison certifications. Wherever you are on your business journey, there's an SG2 to suit your budget, size, and production needs.



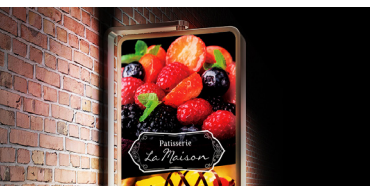
Produce indoor and outdoor graphics—durable up to three years outdoors without lamination.



Create vibrant, long-lasting vehicle graphics—certified for use with 3M and Avery Dennison products.



Produce outstanding wall graphics with smooth gradations and natural skin tones.



Create backlit graphics that are full of light, color and impact.



Included VersaWorks 6 RIP Software

Effortlessly manage your print output with the latest edition of the world's most popular RIP software. In addition to all the cropping, tiling, nesting, color libraries and other popular features, it includes improved processing speed and file handling, five print queues and hot folders with unlimited queue settings. It also offers new color matching features for printing, scanning and transferring color values to matching Roland devices.

NEW INK CERTIFICATIONS FOR **ADDED PRINT ASSURANCE**

The SG2 with TR2 ink ensures the quality and reliability of your graphics printed on industry-leading materials.



The 3M™ MCS™ Warranty covers printing onto 3M products with standard TR2 inks.



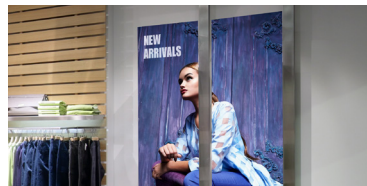
The Avery Dennison™ ICS™ Performance Guarantee Program guarantees same day print, lamination and wrapping with standard TR2 inks.



Print/cut stickers and labels — create individual stickers or batches with absolute ease.



Create graphics for heat transferring onto t-shirts, hoodies, tote bags, children's clothing and more.



Print/cut graphics with ultra-vivid color on films for displays, window graphics and other promotions.



Print on a huge range of coated and uncoated materials to create art and posters.

Brilliant New SG2 Features



True Rich Color and TR2 inks offer a wider color gamut and allow you to generate a whole new level of color vibrancy in your prints.



Automatic Pinch Rollers raise during cut operation to avoid contact with printed graphics and improve cut accuracy with adjustable pressure settings.



New Media Clamps with integrated grooves don't need to be removed at any time— providing a more efficient operation.



New Cutting Features in VersaWorks 6 include Crop Mark by Row functions to improve accuracy on long print runs and PerfCut Mode that allows you to print, cut, and die-cut in a few easy clicks.



Nozzle Mask Function allows you to minimize printer downtime by turning off a specific nozzle band if a nozzle on the printhead is clogged and misfiring.



LED Print and Maintenance Lights make machine procedures clear and comfortable with luminous, natural lights during print operation, and bright, powerful lights when working under your machine hood.



TrueVIS SG2 Series

Large-Format Inkjet Printer/Cutters

Specifications		SG2-640	SG2-540	SG2-300
Printing method		Piezo inkjet method		
Media	Width	12.4 to 64 in. (315 to 1,625 mm)	10.8 to 54 in. (275 to 1,371 mm)	7.1 to 30 in. (182 to 762 mm)
	Thickness	Max. 39 mil (1.0 mm) with liner, for printing Max. 16 mil (0.4 mm) with liner and 9 mil (0.22 mm) without liner, for cutting		
	Roll outer diameter	Max. 8.3 in. (210 mm)		
	Roll weight	Max. 88 lb. (40 kg)	Max. 66 lb. (30 kg)	Max. 55 lb. (25 kg)
	Core diameter (*1)	3 in. (76.2 mm) or 2 in. (50.8 mm)		
Printing/cutting width		Max. 63 in. (1,600 mm)	Max. 53 in. (1,346 mm)	Max. 29 in. (736 mm)
Ink	Types	TR2 Ink (500 mL pouches)		
	Colors	Four colors (Cyan, Magenta, Yellow, and Black)		
Printing resolution (dots per inch)		Max. 1,200 dpi		
Cutting Speed		0.4 to 11.8 in/s (10 to 300 mm/s)		
Blade force (*3)		30 to 500 gf		
Blade	Type	Roland CAMM-1 series blade		
	Offset	0.0 to 59.1 mil (0.000 to 1.500 mm)		
Software resolution (when cutting)		0.98 mil/step (0.025 mm/step)		
Distance accuracy (when printing) (*4) (*5)		Error of less than $\pm 0.3\%$ of distance traveled or ± 11.8 mil (± 0.3 mm), whichever is greater		
Distance accuracy (when cutting) (*4)		Error of less than $\pm 0.4\%$ of distance traveled or ± 11.8 mil (± 0.3 mm), whichever is greater When distance correction has been performed (when the setting for [CUTTING MENU] - [CALIBRATION] has been made): Error of less than $\pm 0.2\%$ of distance traveled or ± 3.9 mil (± 0.1 mm), whichever is greater		
Repeatability (when cutting) (*4) (*6)		± 3.9 mil (± 0.1 mm) or less		
Alignment accuracy for printing and cutting (*4) (*7)		± 19.7 mil (± 0.5 mm) or less		
Alignment accuracy for printing and cutting when reloading media (*4) (*8)		Error of less than $\pm 0.5\%$ of distance traveled, or ± 0.2 in. (± 3 mm), whichever is greater		
Media heating system (*9)		Print heater set temperature: 86 to 112°F (30 to 45°C) Dryer set temperature: 86 to 122°F (30 to 50°C)		
Connectivity		Ethernet (100BASE-TX/1000BASE-T, automatic switching)		
Power-saving function		Automatic sleep feature		
Power requirements		AC 100 to 120 V $\pm 10\%$, 8.0 A, 50/60 Hz AC 220 to 240 V $\pm 10\%$, 4.1 A, 50/60 Hz		AC 100 to 120 V $\pm 10\%$, 5.4 A, 50/60 Hz AC 220 to 240 V $\pm 10\%$, 2.7 A, 50/60 Hz
Power consumption	During operation	Approx. 1,090 W		Approx. 710 W
	Sleep mode	Approx. 40 W		
Acoustic noise level	During operation	63 dB (A) or less		
	During standby	53 dB (A) or less		
Dimensions (with stand)		116 [W] \times 28.8 [D] \times 51.6 [H] in. (2,945 [W] \times 730 [D] \times 1,310 [H] mm)	105.8 [W] \times 28.8 [D] \times 51.6 [H] in. (2,685 [W] \times 730 [D] \times 1,310 [H] mm)	81.5 [W] \times 28.8 [D] \times 51.6 [H] in. (2,070 [W] \times 730 [D] \times 1,310 [H] mm)
Weight (with stand)		434 lb. (197 kg)	397 lb. (180 kg)	324 lb. (147 kg)
Environment	During operation	Temperature: 68 to 90°F (20 to 32°C), Humidity: 35 to 80%RH (no condensation)		
	Not operating	Temperature: 41 to 104°F (5 to 40°C), Humidity: 20 to 80%RH (no condensation)		
Included items		Dedicated stands, power cord, media clamps, media holders, replacement blade for separating knife, manuals, etc.		

Specifications subject to change. For details and latest information, visit rolanddga.com/SG2



Build Your Business with Industry Best Warranty, Service and Support

With the most advanced and reliable machines, backed by unmatched customer service and technical support, Roland keeps you producing and profiting. For additional peace-of-mind, the SG2 is also supplied with a Two-Year Trouble-Free Warranty.*

For detailed features and specifications, visit www.rolanddga.com/SG2

Get social with us.



FOR MORE INFORMATION OR TO FIND A DEALER NEAR YOU, CALL 800-542-2307 OR VISIT WWW.ROLANDDGA.COM/SG2
 ROLAND DGA CORPORATION | 15363 BARRANCA PARKWAY | IRVINE, CALIFORNIA 92618-2216 | 800.542.2307 | 949.727.2100

RDGA-SG2-01 October 2019

*Registration within 60 days of purchase and exclusive, continuous use of Roland inks is required to qualify for the second year of warranty coverage.

THIS PRODUCT IS BROUGHT TO YOU BY



VISIT US ONLINE
SourceOne.Nazdar.com

CALL US
 888-578-5713

© 2019 Nazdar. All Rights Reserved.
 Specifications subject to change without notice.