

ENTRY LEVEL MANUAL SCREEN PRINTERS

V-1000



V1-46
4 table, 6 color shown
Standard size 15" x 17"
(38 x 43 cm) steel pallets
(Shown with optional service pan and wheels)

Micro-registration

The V-1000 upgradeable manual screen press is designed and priced to meet the needs of the entry level screen printer.

The V-1000 press uses the industry's most unique floating head design which minimizes cost. Accurate registration is achieved without the higher price associated with machines of this capacity.

The V-1000 tabletop press starts at \$615.00* and is available from 1 table, 1 color up to 1 table, 4 color. The rotary floor press starts at \$910.00* and is available from 1 table, 1 color up to 4 table, 6 color.

The tabletop unit can be mounted to a utility cart.

Vastex also makes the V-2000 heavy duty press.

V-1000 Press

- VALUE** Quality at an entry level price
- LONG LASTING** Steel Pallets w/ rubber tops - interchangeable with the V-2000**
- ACCURATE** Micro-registration
- PRECISE** Holds accurate multicolor printing registration
- INNOVATIVE** Floating Head, 3 point bearing lock allows multiple heads down
- ADJUSTABLE** 6 way head leveling adjustment
- VERSATILE** Available up to 4 table, 6 color (4x6)
- CAPACITY** Holds up to 21" x 28" (51 x 61 cm) screens
- GUARANTEED** 1 year warranty on manufacturer's defects
- SHIPS UPS** Can even ship UPS in multiple boxes
- EXPANDABLE** From 1 table, 1 color (1x1) to 4 table, 6 color (4x6)

Options

- Utility cart for storage and mobility
- VRS Pin Registration
- Service pan and wheels
- Youth, oversized**, sleeve, hat, pocket, and polo shirt pallets

Utility Cart (UC-1000) ships UPS with:
4 locking casters,
10 screen shelves (for 5 screens) &
1 flat shelf (sits on 1 screen shelf).



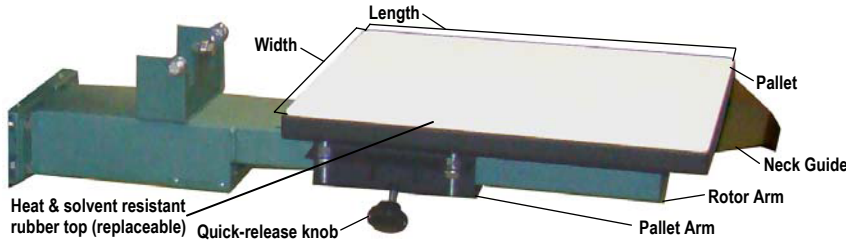
V1-T14
1 table, 4 color
Standard size
15" x 17"
(38 x 43 cm)
steel pallets
shown mounted on
optional utility cart

*Starting List Price (USD). 6% sales tax will be added for PA billing addresses. Prices subject to change without notice.

**The largest pallet available is the oversized 17" x 21" (43 x 53 cm).

Vastex, quality made in the U.S.A. since 1960

V-1000 Pallets and Accessories



Never warp, high strength steel construction
Heat & solvent resistant rubber top (replaceable)
Neck guide to aid in garment positioning
4-bolt adjustable, pallet arm (included w/ pallet)
Elevated pallet for easy loading
25 Year Non-warping Pallet Warranty

Shirt Pallets

- 13" x 11.5" (33 x 29 cm)
- 14" x 14" (36 x 36 cm)
- 15" x 17" (38 x 43 cm) Standard
- 10.5" x 17" (27 x 43 cm) Junior
- 17" x 21" (43 x 53 cm) Oversized



Single Long Sleeve Pallets

- 4" x 19" (10 x 48 cm)
- 6" x 19" (15 x 48 cm)



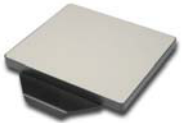
Short Sleeve Pallets

- 3" x 9" (8 x 23 cm)
- 4" x 9" (10 x 23 cm)
- 5" x 9" (13 x 23 cm)



Mini Pallets

- 6" x 6" (15 x 15 cm)
- 9" x 8" (23 x 20 cm)



Short Leg Pallet

- 6" x 9" (15 x 23 cm)



Clamp on Pallet Adapters

- 6.5" x 5" (17 x 13 cm) Polo Attachment
- 3.875" x 4" (9.8 x 10 cm) Pocket Attachment
- 3" x 5" (8 x 13 cm) Above Pocket Attachment



Umbrella Pallet

- 7.25" x 16.375" x 11" (18.4 x 41.6 x 27.9 cm)



Hat Pallets

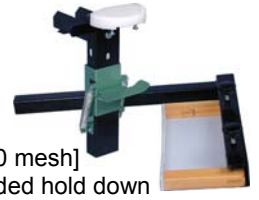
- VP-H1**
5.125" x 3" (13 x 8 cm)
- VP-H2**
4.875" x 3" (12 x 8 cm)
- VP-H3**
3.563" x 2.5" (9 x 6 cm)



Hat Printing Attachment

Attachment contains:

- (1) Hat pallet (3 sizes to choose from)
- (1) Screen arm extension
- (1) 3.5" (9 cm) squeegee
- (1) Hat screen [9" x 12" (23 x 30 cm) w/ 110 mesh]
- (1) Hat pallet arm attachment w/ spring loaded hold down

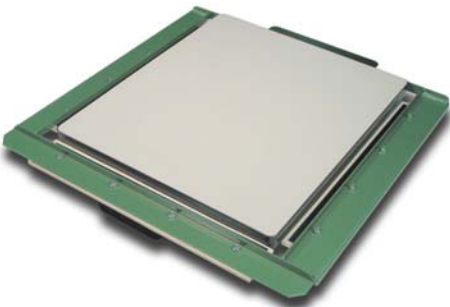


Jacket Hold Downs

The Quick-Stretch is for printing lined garments like jackets, or delicate fabrics where spray adhesive can't be used. Fits around existing pallet.

Works with:
6" x 6" (15 x 15 cm)
4" x 17" (10 x 43 cm)
9" x 8" (23 x 20 cm)
10.5" x 17" (27 x 43 cm)
15" x 17" (38 x 43 cm)
17" x 21" (43 x 53 cm)

Available for Many Pallet Sizes,
PLUS Sleeve & Custom Sizes



V-1000 Technical Specifications

Maximum Screen Size	21" wide x 28" long (53 x 71 cm)	
Maximum Pallet Size	17" wide x 21" long (43 x 53 cm)	
Overall Size 1 table 4 color (1x4), tabletop unit [w/ 20" x 24" (51 x 61cm) screen]	34" x 62" x 29" tall (86 x 157 x 74 cm)	
Overall Size 4 table 4 color (4x4), rotary floor unit [w/ 20" x 24" (51 x 61cm) screen]	81" diameter x 58" tall (206 x 147 cm)	
Overall Size 4 table 6 color (4x6) rotary floor unit [w/ 20" x 24" (51 x 61cm) screen]	92" diameter x 58" tall (234 x 147 cm)	
Shipping	Box Size	Weight
Print Head	13" x 13" x 7" (33 x 33 x 18 cm)	11 lbs (5 kg)
Rotor Arm	37" x 11" x 7" (94 x 28 x 18 cm)	14 lbs (6.4 kg)
Two Rotor Arms (packed together)	37" x 11" x 14" (94 x 28 x 36 cm)	28 lbs (12.7 kg)
Standard Size Pallet with Pallet Arm	24" x 19" x 7" (61 x 48 x 18 cm)	20 lbs (9 kg)
Two Standard Size Pallets with Pallet Arms	24" x 19" x 14" (61 x 48 x 36 cm)	40 lbs (18 kg)
Legs, floor model	37" x 9" x 9" (94 x 23 x 23 cm)	40 lbs (18 kg)
Center Hub Assembly 4 table 6 color (4x6)	24" x 24" x 16" (61 x 61 x 41 cm)	87 lbs (39.5 kg)
Center Hub Assembly 4 table 4 color (4x4)	16" x 16" x 16" (41 x 41 x 41 cm)	61 lbs (27.7 kg)
Tabletop Press (must add print heads & pallet)	49" x 13" x 13" (124 x 33 x 33 cm)	38 lbs (17.2 kg)

All shipping weights and dimensions are for continental US shipping only. Call for other shipping specifications. Ex-works from Allentown PA. Although all V-1000 press sub assemblies are packed into individual boxes, which can be shipped via small package carrier like, UPS, Fed-X, DHL, it may be more economical to use a *freight company (common carrier) depending on your area.

*If shipping by a common carrier there will be a \$25.00 skid charge and you must add 40 lbs. for the skid.

Example: A V-1-44 is a V-1000 4 table 4 color floor unit press. It will ship in the following boxes:

- (1) Center hub assembly 4x4, (1) Legs, floor model, (2) Two rotor arms, (2) Two pallets with pallet arms, and (4) Print heads.

How to order V-1000 press:

- 1- Choose tabletop or floor unit.
(Tabletop is 4 color maximum.)
(Floor model is 4 color or 6 color maximum.)
- 2- Choose number of tables/stations, 1 on tabletop 1-4 on floor unit
- 3- Choose number of colors, 1-4 on tabletop 1-6 on floor unit

Model # nomenclature

V1-X1X1X1
 1 to 4 (tabletop) or 1 to 6 (rotary floor unit) = # of Colors
 1 (tabletop, non rotary) or 1 to 4 (floor unit, rotary) = # of Tables
 T = Tabletop (non rotary, one table, up to 4 colors)
 Blank = Floor Model (rotary, 1 to 4 tables, up to 6 colors)
 V1 = V-1000 Series entry level manual screen press