

14645PFXBBG Epic Bleed Blocker Gray

Wilflex™ Epic Bleed Blocker Gray is a non-phthalate plastisol ink specially formulated to help control dye migration on 100% polyester and poly blends that use migrating dyes such as camouflage. Epic Bleed Blocker Gray provides suitable bleed-resistant for general purpose synthetic printing and is optimized for high volume, high speed production.

Highlights

- Suitable bleed-resistance for general purpose large production.
- Good flow properties for high speed production.
- Smooth surface.
- Works on a variety of fabrics. Effective bleed-resistance with blends that use migrating dyes, such as camouflage.

Printing Tips

- Overprint with Epic low-bleed inks, white and/or colors.
- Best results are achieved using recommended mesh counts.
- Use consistent, high tension screens to optimize performance.
- To optimize bleed resistance, set the dryer belt at the highest possible speed while still ensuring that the ink film reaches 305°F (150°C).

Compliance

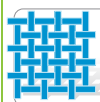
- Non-phthalate.
- For individual compliance certifications, please visit www.wilflex.com/compliance.

Precautions

- Perform fusion tests before production. Failure to cure ink properly may result in poor wash fastness, inferior adhesion and unacceptable durability. Ink gel and cure temperatures should be measured using a Thermoprobe placed directly in the wet ink film and verified on the production run substrate(s) and production equipment. It is the responsibility of the printer to determine that the correct ink has been selected for a specific substrate and the application processes meet your customer's standards or specifications.
- Due to difference in heat and moisture absorption rates between fabrics, the oven settings will require adjustments when switching from one fabric to another.
- Polyester fabrics are likely to have dye migration issues. To determine a material's bleed potential, please reference the testing procedures outlined in the Wilflex User's Manual.
- Avoid over-flashing as it can result in poor intercoat adhesion of colors.
- Reducing viscosity will adversely affect opacity.
- Stir plastisols before printing.
- Do not dry clean, bleach or iron printed area.
- **NON-CONTAMINATION OF EPIC INKS:** Do not add or mix non-Epic inks, additives or extenders with Epic inks. All buckets, palette knives, stirring apparatus, squeegees, flood bars and screens must be cleaned properly and free of phthalates and pvc containing inks. Non-phthalate emulsions and pallet adhesives must be used. Failure to follow these precautions may cause phthalate contamination in violation of consumer protection laws and regulations.
- Any application not referred in this product information bulletin should be pre-tested or consultation sought with Wilflex Technical Services Department prior to printing.
- Email: techserviceswilflex@polyone.com



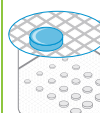
Fabric Types
100% polyester, cotton/poly blends, poly/synthetic blends, other blends



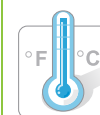
Mesh
Counts: 86-158 t/in (34-62 t/cm)
Tension: 25-35 n/cm²



Squeegee
Durometer: 60-70, 60-90-60
Edge: Square, Sharp
Stroke: Medium-Fast
**Do not use excess squeegee pressure.*



Non-Phthalate Stencil
Direct: 2 over 2
Capillary/Thick Film: N/A
Off Contact: 1/16" (.2cm)



Flash & Cure Temperatures
Flash: 160°F (70°C)
Cure: 305°F (150°C)



Pigment Loading
EQ: N/A
MX: N/A
PC: N/A
**All percentages listed at % by weight.*



Epic Additives
Extender: N/A
Reducer: Epic Viscosity Buster-1% max
**All percentages listed at % by weight.*



Storage
65-90°F (18-32°C)
Avoid direct sunlight.
Use within one year of receipt.



Clean Up
Ink degradant or press wash.



Health & Safety
MSDS: www.polyone.com or
Contact your local CSR.