

11001PFW Epic Cotton White

Wilflex™ Epic Cotton White is a non-phthalate premium white ink that delivers good printability and visual appearance. Epic Cotton White can be used as an underbase flash white or as a highlight white. It is characterized by an extremely fast flash time with minimal after-tack, excellent fiber mat-down, high brightness, and matte appearance. Epic Cotton White is designed for applications on 100% cotton fabrics.

Highlights

- ▶ High opacity.
- ▶ Smooth, bright surface.
- ▶ Matte finish.
- ▶ Fast flashing with minimal after-tack.
- ▶ Odorless.

Printing Tips

- ▶ Best results achieved using recommended mesh counts.
- ▶ Use consistent, high-tensioned screen mesh to optimize performance properties.
- ▶ To increase production speeds, use finer mesh counts for the flash plate to decrease gel time. Set flash dwell times on heated pallets to simulate production. Adjust your settings so that the ink is just dry to the touch.

Compliance

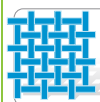
- ▶ Non-phthalate.
- ▶ For individual compliance certifications, please visit www.wilflex.com/compliance.

Precautions

- ▶ Perform fusion tests before production. Failure to cure ink properly may result in poor wash fastness, inferior adhesion and unacceptable durability. Ink gel and cure temperatures should be measured using a Thermoprobe placed directly in the wet ink film and verified on the production run substrate(s) and production equipment. It is the responsibility of the printer to determine that the correct ink has been selected for a specific substrate and the application processes meet your customer's standards or specifications.
- ▶ Stir plastisols before printing.
- ▶ Do not dry clean, bleach or iron printed area.
- ▶ **NON-CONTAMINATION OF EPIC INKS:** Do not add or mix non-Epic inks, additives or extenders with Epic inks. All buckets, palette knives, stirring apparatus, squeegees, flood bars and screens must be cleaned properly and free of phthalates and pvc containing inks. Non-phthalate emulsions and pallet adhesives must be used. Failure to follow these precautions may cause phthalate contamination in violation of consumer protection laws and regulations.
- ▶ Any application not referred in this product information bulletin should be pre-tested or consultation sought with Wilflex Technical Services Department prior to printing.
- ▶ Email: techserviceswilflex@polyone.com



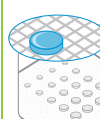
Fabric Types
100% cotton



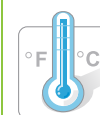
Mesh
Counts: 86-305 t/in (34-120 t/cm)
Tension: 25-35 n/cm²



Squeegee
Durometer: 60-70, 60/90/60
Edge: Square, Sharp
Stroke: Medium-Fast
**Do not use excess squeegee pressure.*



Non-Phthalate Stencil
Direct: 2 over 2
Capillary/Thick Film: N/A
Off Contact: 1/16" (.2 cm)



Flash & Cure Temperatures
Flash: 220°F (105°C)
Cure: 320°F (160°C)



Pigment Loading
EQ: N/A
MX: N/A
PC: N/A
**All percentages listed at % by weight.*



Epic Additives
Extender: N/A
Reducer: Epic Viscosity Buster-1% max
**All percentages listed at % by weight.*



Storage
65-90°F (18-32°C)
Avoid direct sunlight.
Use within one year of receipt.



Clean Up
Ink degradent or press wash.



Health & Safety
MSDS: www.polyone.com or
Contact your local CSR.