

10000PFX Epic PF Extender Base

Wilflex™ Epic Extender Base is a non-phthalate ink additive designed to reduce and extend the viscosity of standard plastisol inks without adversely affecting the cure properties. Epic Extender Base will improve the flow and printing characteristics of most plastisol inks.

Highlights

- ▶ Recommended for use with Epic inks at 10% max by weight.
- ▶ Recommended for use with Epic specialties Epic NuPuff and Epic Suede Inks at less than 10% max by weight. Excessive amounts will reduce puff height.
- ▶ Not recommended for use with Epic Transfer Inks (TFX), Athletic (MSH, ATH) and One-Step Nylon Inks (OSN).
- ▶ Can be used as a stand-alone base with Epic PCs to make transparent finished inks or process colors.

Printing Tips

- ▶ Use consistent, high-tensioned screen mesh to optimize performance properties.

Compliance

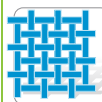
- ▶ Non-phthalate.
- ▶ For individual compliance certifications, please visit www.wilflex.com/compliance.

Precautions

- ▶ Perform fusion tests before production. Failure to cure ink properly may result in poor wash fastness, inferior adhesion and unacceptable durability. Ink gel and cure temperatures should be measured using a Thermoprobe placed directly in the wet ink film and verified on the production run substrate(s) and production equipment. It is the responsibility of the printer to determine that the correct ink has been selected for a specific substrate and the application processes meet your customer's standards or specifications.
- ▶ Epic Extender Base is recommended for use in Wilflex Epic inks only.
- ▶ Additions above 10% may reduce opacity.
- ▶ Wilflex products have been carefully designed to perform within a given viscosity range and any dramatic change in viscosity may result in a change in printing characteristics.
- ▶ Stir plastisols before printing.
- ▶ Do not dry clean, bleach or iron printed area.
- ▶ **NON-CONTAMINATION OF EPIC INKS:** Do not add or mix non-Epic inks, additives or extenders with Epic inks. All buckets, palette knives, stirring apparatus, squeegees, flood bars and screens must be cleaned properly and free of phthalates and pvc containing inks. Non-phthalate emulsions and pallet adhesives must be used. Failure to follow these precautions may cause phthalate contamination in violation of consumer protection laws and regulations.
- ▶ Any application not referred in this product information bulletin should be pre-tested or consultation sought with Wilflex Technical Services Department prior to printing.
- ▶ Email: techserviceswilflex@polyone.com



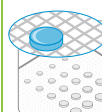
Fabric Types
See relevant PIB.



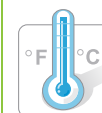
Mesh
Counts: See relevant PIB.
Tension: See relevant PIB.



Squeegee
Durometer: See relevant PIB.
Edge: See relevant PIB.
Stroke: See relevant PIB.
**Do not use excess squeegee pressure.*



Non-Phthalate Stencil
Direct: See relevant PIB.
Capillary/Thick Film: See relevant PIB.
Off Contact: See relevant PIB.



Flash & Cure Temperatures
Flash: 160°F (70°C)
Cure: 300°F (150°C)



Pigment Loading
EQ: N/A
MX: N/A
PC: N/A
**All percentages listed at % by weight.*



Epic Additives
Extender: N/A
Reducer: N/A
**All percentages listed at % by weight.*



Storage
65-90°F (18-32°C)
Avoid direct sunlight.
Use within one year of receipt.



Clean Up
Ink degradent or press wash.



Health & Safety
MSDS: www.polyone.com or
Contact your local CSR.