

## 11620TFX Epic TFX Lithoprint White

Wilflex™ Epic TFX Lithoprint White is a plastisol screen printing ink formulated as an overprinting white ink for lithographic offset four-color process decals. Epic TFX Lithoprint White has bright color, excellent cross-linking and adhesion properties, and excellent wash properties. Epic TFX Lithoprint White can be heat transferred using a conventional heat-press with a standard cool/cold-peel application method.

### Highlights

- ▶ Good color and tensile strength.
- ▶ Excellent cross-linking properties.
- ▶ Cold-peel transfer only.

### Printing Tips

- ▶ The use of 10210TFX Epic TFX Printable Adhesive will improve the adhesion of the litho back white on stretchable fabric surfaces.
- ▶ Allow transfer to cool for approximately 15 seconds before removing the paper.
- ▶ Adjustments to the drying mechanism may be required as the variables of different drying (heat) types, length of dryer conveyor and drying units, will affect the overall transfer finish.

### Compliance

- ▶ Non-phthalate.
- ▶ For individual compliance certifications, please visit [www.wilflex.com/compliance](http://www.wilflex.com/compliance).

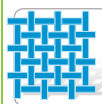
### Precautions

- ▶ Perform fusion tests before production. Failure to cure ink properly may result in poor wash fastness, inferior adhesion and unacceptable durability. Ink gel and cure temperatures should be measured using a Thermoprobe placed directly in the wet ink film and verified on the production run substrate(s) and production equipment. It is the responsibility of the printer to determine that the correct ink has been selected for a specific substrate and the application processes meet your customer's standards or specifications.
- ▶ Pretest all fabrics for desired properties before beginning production printing. / Turn the garment inside-out when washing and drying to keep the transfer looking its best.
- ▶ Examine the fabric type and color before and after the application of the transfer, as color distortion may occur due to the introduction of heat to sensitive fabric types and dyestuffs inherent in the garment.
- ▶ It is advisable to press the blank shirt under transfer press before applying transfer to reduce moisture in garment.
- ▶ Stir plastisols before printing.
- ▶ Do not dry clean, bleach or iron printed area.
- ▶ **NON-CONTAMINATION OF EPIC INKS:** Do not add or mix non-Epic inks, additives or extenders with Epic inks. All buckets, palette knives, stirring apparatus, squeegees, flood bars and screens must be cleaned properly and free of phthalates and pvc containing inks. Non-phthalate emulsions and pallet adhesives must be used. Failure to follow these precautions may cause phthalate contamination in violation of consumer protection laws and regulations.
- ▶ Any application not referred in this product information bulletin should be pre-tested or consultation sought with Wilflex Technical Services Department prior to printing.
- ▶ Email: [techserviceswilflex@polyone.com](mailto:techserviceswilflex@polyone.com)



#### Fabric Types

100% cotton, cotton blends, rayon, linen, and Lycra. NOT recommended for nylon or satin fabrics.



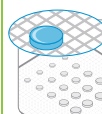
#### Mesh

Counts: 86-125 t/in (34-49 t/cm)  
Tension: 25-35 n/cm<sup>2</sup>



#### Squeegee

Durometer: 60-80  
Edge: Hard, Square  
Stroke: Hard flood, Slow speed  
*\*Do not use excess squeegee pressure.*



#### Non-Phthalate Stencil

Direct: N/A  
Capillary/Thick Film: N/A  
Off Contact: 1/16" (.2 cm)



#### Flash & Cure Temperatures

Flash: 220-260°F (105-125°C). Lower temps will result in a transfer with little tensile strength, and higher temps will negatively affect the "split" of the final transfer.  
Cure: 375°F (190°C)



#### Pigment Loading

EQ: N/A  
MX: N/A  
PC: N/A  
*\*All percentages listed at % by weight.*



#### Epic Additives

Extender: N/A  
Reducer: N/A  
*\*All percentages listed at % by weight.*



#### Storage

65-90°F (18-32°C)  
Avoid direct sunlight.  
Use within one year of receipt.



#### Clean Up

Ink degradent or press wash.



#### Health & Safety

MSDS: [www.polyone.com](http://www.polyone.com) or  
Contact your local CSR.