

11000TFX Epic TFX Super White
11010TFX Epic TFX Premium White

Wilflex™ Epic TFX Super White and Epic TFX Premium White are soft feel transfer inks formulated to provide excellent opaque prints on dark fabrics.

Highlights

- ▶ Opaque white ink.
- ▶ Good tensile strength.
- ▶ Excellent printability.
- ▶ Hot split, hot-peel or cold-peel.

Printing Tips

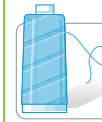
- ▶ The use of 10210TFX Epic TFX Printable Adhesive will improve adhesion of Epic Transflex inks to a far wide range of substrates when cold peeled.
- ▶ When using hot-split/hot peel transfers, transfer paper should be peeled immediately after transferring for optimal results.
- ▶ When cold-peeling, allow transfer to cool for approximately 15 seconds before removing the paper.
- ▶ Adjustments to the drying mechanism may be required as the variables of different drying (heat) types, length of dryer conveyor and drying units, will affect the overall transfer finish.
- ▶ The majority of standard transfer papers can be used with confidence. If a softer feel transfer is required, an uncoated transfer paper is recommended. In most cases, hot-split/hot-peel transfer paper will be required.
- ▶ Recommended Heat Press Application - Transfer Heat-Pressed to Garment:
- ▶ Temperature :: 375°-380°F (190°-194°C)
- ▶ Pressure :: 40-50 pounds
- ▶ Time :: 7-10 seconds

Compliance

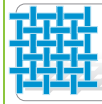
- ▶ Non-phthalate.
- ▶ For individual compliance certifications, please visit www.wilflex.com/compliance.

Precautions

- ▶ Perform fusion tests before production. Failure to cure ink properly may result in poor wash fastness, inferior adhesion and unacceptable durability. Ink gel and cure temperatures should be measured using a Thermoprobe placed directly in the wet ink film and verified on the production run substrate(s) and production equipment. It is the responsibility of the printer to determine that the correct ink has been selected for a specific substrate and the application processes meet your customer's standards or specifications.
- ▶ Pre-print, transfer and test all fabrics for desired properties before beginning production printing.
- ▶ Turn the garment inside-out when washing and drying to keep the transfer looking its best.
- ▶ Examine the fabric type and color before and after the application of the transfer, as color distortion may occur due to the introduction of heat to sensitive fabric types and dye-stuffs inherent in the garment.
- ▶ It is advisable to press the blank shirt under transfer press before applying transfer to reduce moisture in garment.
- ▶ Stir plastisols before printing.
- ▶ Do not dry clean, bleach or iron printed area.
- ▶ **NON-CONTAMINATION OF EPIC INKS:** Do not add or mix non-Epic inks, additives or extenders with Epic inks. All buckets, palette knives, stirring apparatus, squeegees, flood bars and screens must be cleaned properly and free of phthalates and pvc containing inks. Non-phthalate emulsions and pallet adhesives must be used. Failure to follow these precautions may cause phthalate contamination in violation of consumer protection laws and regulations.
- ▶ Any application not referred in this product information bulletin should be pre-tested or consultation sought with Wilflex Technical Services Department prior to printing.
- ▶ Email: techserviceswilflex@polyone.com



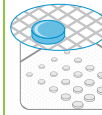
Fabric Types
 100% cotton, cotton blends, rayon, linen, and Lycra. NOT recommended for nylon or satin fabrics.



Mesh
 Counts: 86-125 t/in (34-49 t/cm)
 Tension: 25-35 n/cm²



Squeegee
 Durometer: 60-80
 Edge: Hard, Square
 Stroke: Hard flood, Slow speed
**Do not use excess squeegee pressure.*



Non-Phthalate Stencil
 Direct: N/A
 Capillary/Thick Film: N/A
 Off Contact: 1/16" (.2 cm)



Flash & Cure Temperatures
 Flash: 250-270°F (120-130°C). Lower temps will result in a transfer with little tensile strength and higher temps will negatively affect the "split" of the final transfer.
 Cure: 375°F (190°C)



Pigment Loading
 EQ: N/A
 MX: N/A
 PC: N/A
**All percentages listed at % by weight.*



Epic Additives
 Extender: N/A
 Reducer: N/A
**All percentages listed at % by weight.*



Storage
 65-90°F (18-32°C)
 Avoid direct sunlight.
 Use within one year of receipt.



Clean Up
 Ink degradant or press wash.



Health & Safety
 MSDS: www.polyone.com or
 Contact your local CSR.