

Epic Transflex Base

Wilflex™ Epic Transflex inks are used to create a soft-feel, hot-split transfers that give the appearance of a direct print. Using the Wilflex IMS software and Epic PCs, users can easily create translucent or opaque colors by adjusting the pigment loading. Properly formulated colors will produce soft, opaque prints on dark fabrics, without underbasing. Epic Transflex inks may also be used for conventional cold-peel transfers. Epic Transflex inks are designed for fine line detail and solid spot color printing applications

Highlights

- ▶ Hot-split transfer ink with a soft feel.
- ▶ Create prints for white or pastel garments with lower pigment loading.
- ▶ Create prints for dark garments with higher pigment loading.
- ▶ Excellent printability.
- ▶ Hot-split, hot-peel or cold-peel

Printing Tips

- ▶ The use of 10210TF Printable Adhesive will improve the adhesion of Epic Transflex inks to a far wider range of substrates when cold-peeled.
- ▶ The transfer paper should be peeled immediately after transferring for optimum results. When cold-peeling, allow 15 second cool down before removing the paper.
- ▶ Adjustments to the drying mechanism may be required as the variables of different drying (heat) types, length of dryer conveyor and drying units, will affect the overall transfer finish.
- ▶ The majority of standard transfer papers can be used with confidence. If a softer-feel transfer is required, an uncoated transfer paper is recommended. In most cases, a hotsplit/hot-peel transfer paper will be required.

Compliance

- ▶ Non-phthalate.
- ▶ For individual compliance certifications, please visit www.wilflex.com/compliance.

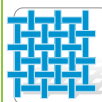
Precautions

- ▶ Perform fusion tests before production. Failure to cure ink properly may result in poor wash fastness, inferior adhesion and unacceptable durability. Ink gel and cure temperatures should be measured using a Thermoprobe placed directly in the wet ink film and verified on the production run substrate(s) and production equipment. It is the responsibility of the printer to determine that the correct ink has been selected for a specific substrate and the application processes meet your customer's standards or specifications.
- ▶ Pretest all fabrics for desired properties before beginning production printing. / Turn garment inside-out when washing/drying to keep the transfer looking its best.
- ▶ Examine the fabric type and color before and after the application of the transfer, as color distortion may occur due to the introduction of heat to sensitive fabric types and dyestuffs inherent in the garment.
- ▶ It is advisable to press the blank shirt under transfer press before applying transfer to reduce moisture in garment.
- ▶ Stir plastisols before printing.
- ▶ Do not dry clean, bleach or iron printed area.
- ▶ **NON-CONTAMINATION OF EPIC INKS:** Do not add or mix non-Epic inks, additives or extenders with Epic inks. All buckets, palette knives, stirring apparatus, squeegees, flood bars and screens must be cleaned properly and free of phthalates and pvc containing inks. Non-phthalate emulsions and pallet adhesives must be used. Failure to follow these precautions may cause phthalate contamination in violation of consumer protection laws and regulations.
- ▶ Any application not referred in this product information bulletin should be pre-tested or consultation sought with Wilflex Technical Services Department prior to printing.
- ▶ Email: techserviceswilflex@polyone.com



Fabric Types

100% cotton, cotton blends, rayon, linen, and Lycra. NOT recommended for nylon or satin fabrics.



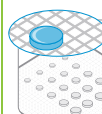
Mesh

Counts: 86-125 t/in (34-49 t/cm)
Tension: 25-35 n/cm²



Squeegee

Durometer: 60-80
Edge: Sharp, square
Stroke: Hard flood, Medium speed
**Do not use excess squeegee pressure.*



Non-Phthalate Stencil

Direct: 2 over 2
Capillary/Thick Film: N/A
Off Contact: 1/16" (.2 cm)



Flash & Cure Temperatures

Flash: 160°F (70°C)
Cure: 300°F (150°C)



Pigment Loading

EQ: N/A
MX: N/A
PC: 20% max
**All percentages listed at % by weight.*



Epic Additives

Extender: N/A
Reducer: N/A
**All percentages listed at % by weight.*



Storage

65-90°F (18-32°C)
Avoid direct sunlight.
Use within one year of receipt.



Clean Up

Ink degradant or press wash.



Health & Safety

MSDS: www.polyone.com or
Contact your local CSR.