

10250PFXNPF Epic NuPuff Base

Wilflex™ Epic NuPuff is a non-phthalate plastisol puff ink designed for raised texture effects. Epic NuPuff has excellent durability and resistance to overblow.

Highlights

- ▶ Produces an elevated surface for specialty designs.
- ▶ Matte finish.
- ▶ Excellent durability.
- ▶ Can be mixed with Epic PCs, Epic EQs, or Epic MX to create custom colors.
- ▶ Resistance to overblow in the dryer.

Printing Tips

- ▶ Different effects may be achieved through the use of multiple passes, flash curing, thick screen stencils and overprinting standard and specialty inks.
- ▶ In multi-color printing, it is necessary to flash the puff prior to overprinting.
- ▶ If printing a large area, lightweight fabric may pucker. To alleviate puckering, print a mezzotint or dot pattern (an 80 percent solid).

Compliance

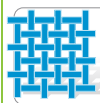
- ▶ Non-phthalate.
- ▶ For individual compliance certifications, please visit www.wilflex.com/compliance.

Precautions

- ▶ Perform fusion tests before production. Failure to cure ink properly may result in poor wash fastness, inferior adhesion and unacceptable durability. Ink gel and cure temperatures should be measured using a Thermoprobe placed directly in the wet ink film and verified on the production run substrate(s) and production equipment. It is the responsibility of the printer to determine that the correct ink has been selected for a specific substrate and the application processes meet your customer's standards or specifications.
- ▶ Stir plastisols before printing.
- ▶ Do not dry clean, bleach or iron printed area.
- ▶ **NON-CONTAMINATION OF EPIC INKS:** Do not add or mix non-Epic inks, additives or extenders with Epic inks. All buckets, palette knives, stirring apparatus, squeegees, flood bars and screens must be cleaned properly and free of phthalates and pvc containing inks. Non-phthalate emulsions and pallet adhesives must be used. Failure to follow these precautions may cause phthalate contamination in violation of consumer protection laws and regulations.
- ▶ Any application not referred in this product information bulletin should be pre-tested or consultation sought with Wilflex Technical Services Department prior to printing.
- ▶ Email: techserviceswilflex@polyone.com



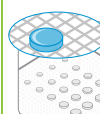
Fabric Types
100% cotton, cotton blends



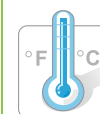
Mesh
Counts: 61-110 t/in (24-43 t/cm)
Tension: 25-35 n/cm²



Squeegee
Durometer: 60-70
Edge: Rounded
Stroke: Medium
**Do not use excess squeegee pressure.*



Non-Phthalate Stencil
Direct: 2 over 2
Capillary/Thick Film: N/A
Off Contact: 1/16" (.2cm)



Flash & Cure Temperatures
Flash: 160°F (70°C)
Cure: 300°F (150°C)



Pigment Loading
EQ: Use IMS System.
MX: N/A
PC: Use IMS System.
**All percentages listed at % by weight.*



Epic Additives
Extender: N/A
Reducer: Epic Viscosity Buster-3% max
**All percentages listed at % by weight.*



Storage
65-90°F (18-32°C)
Avoid direct sunlight.
Use within one year of receipt.



Clean Up
Ink degradent or press wash.



Health & Safety
MSDS: www.polyone.com or
Contact your local CSR.